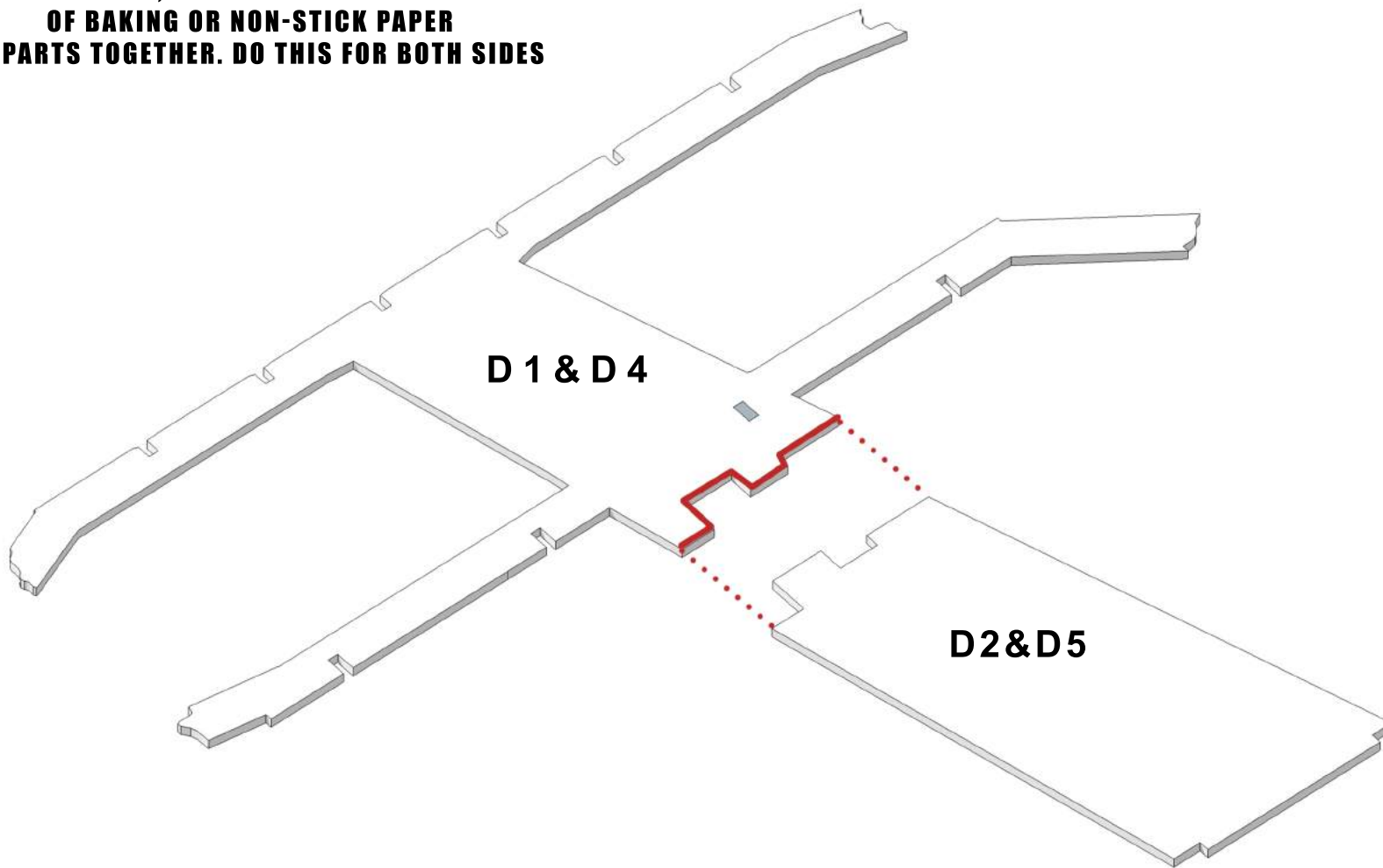




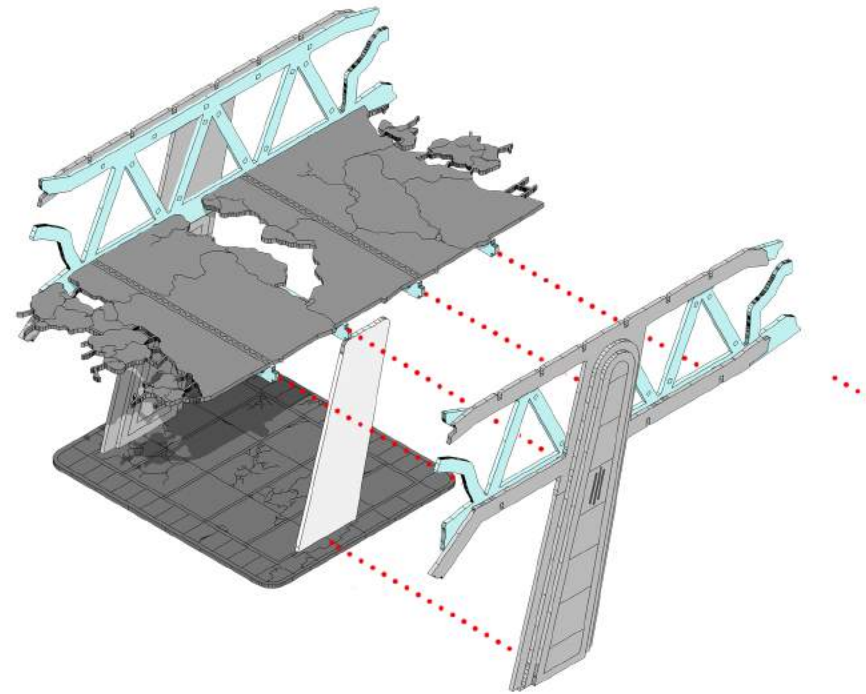
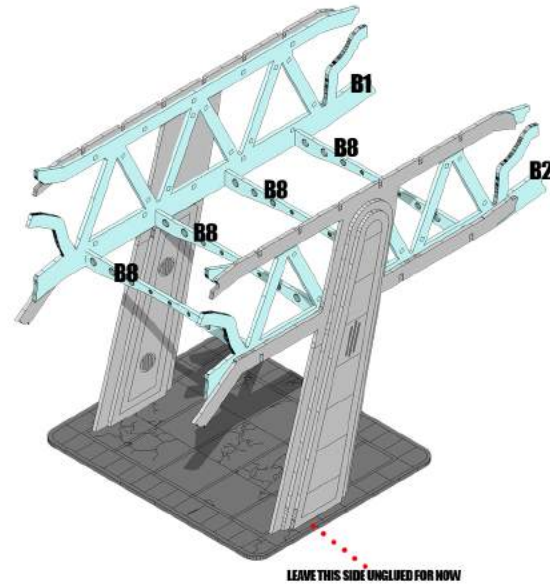
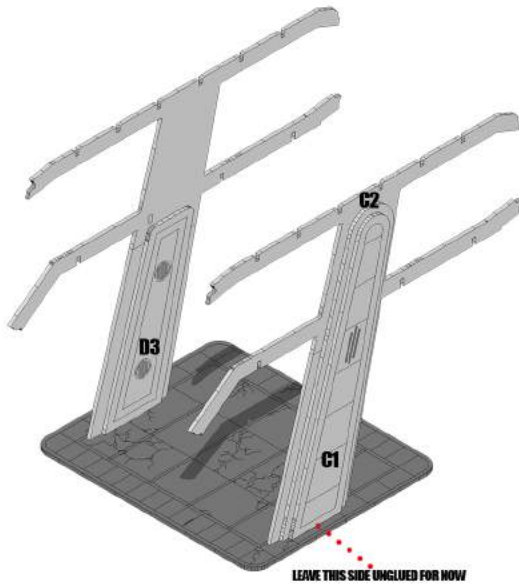
BROKEN HIGHWAY - HVN#1030

**LAY THE MAIN SIDE SECTIONS FLAT. MAKE SURE YOU HAVE
A FLAT SOLID SURFACE, YOU CAN LAY THE PARTS ON A PIECE
OF BAKING OR NON-STICK PAPER
GLUE PARTS TOGETHER. DO THIS FOR BOTH SIDES**





BROKEN HIGHWAY - HVN#1030



**TAKE OUTSIDE LAYERS C1 & C2, SLOT INTO HOLES IN BASE
DO THIS FOR BOTH SIDES. GLUE ONE SIDE INTO BASE. LEAVE
THE OTHER SIDE UNGLUED FOR NOW, YOU WILL NEED TO REMOVE IT
TO FIT THE INTERNAL SUPPORTS & ROAD IN.**

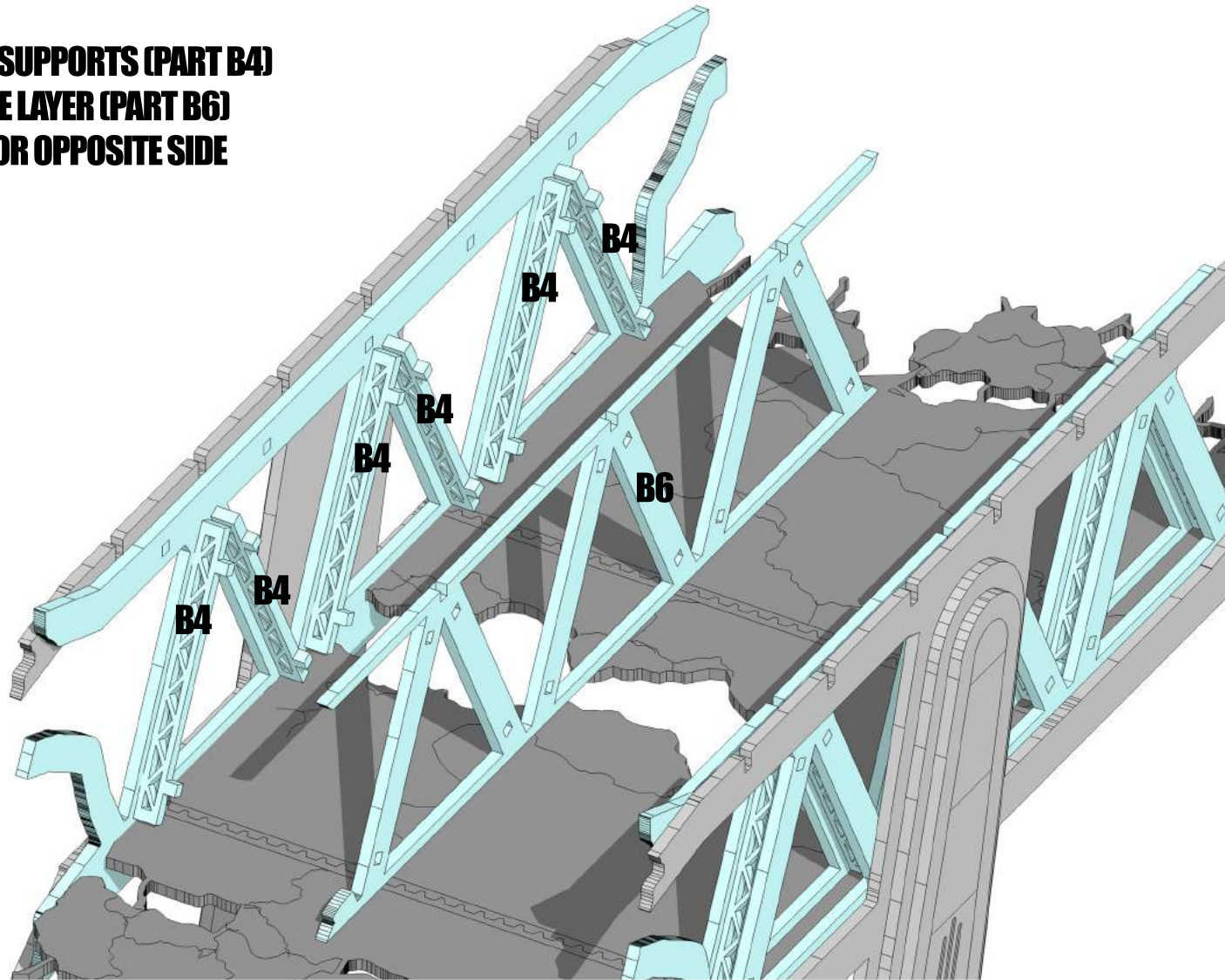
**CONTINUE TO LEAVE ONE SIDE UNGLUED. TAKE THE PARTS NOTED ABOVE
AND GLUE INTO ONE SIDE OF THE HIGHWAY**

NOW YOU CAN GLUE THE REMAINING SIDE ON.



BROKEN HIGHWAY - HVN#1030

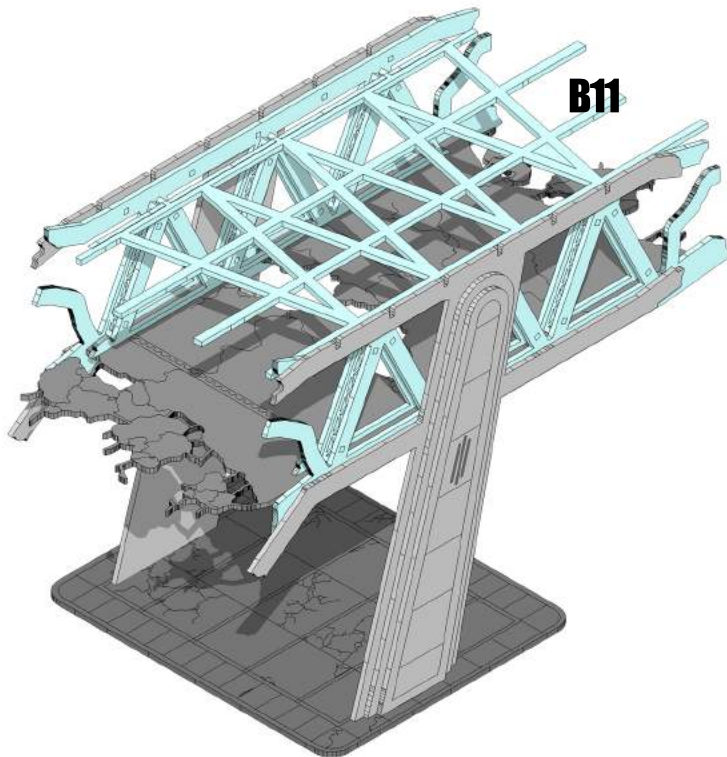
**PLACE INTERNAL CROSS SUPPORTS (PART B4)
AND GLUE ON OUTSIDE LAYER (PART B6)
REPEAT SAME STEP FOR OPPOSITE SIDE**



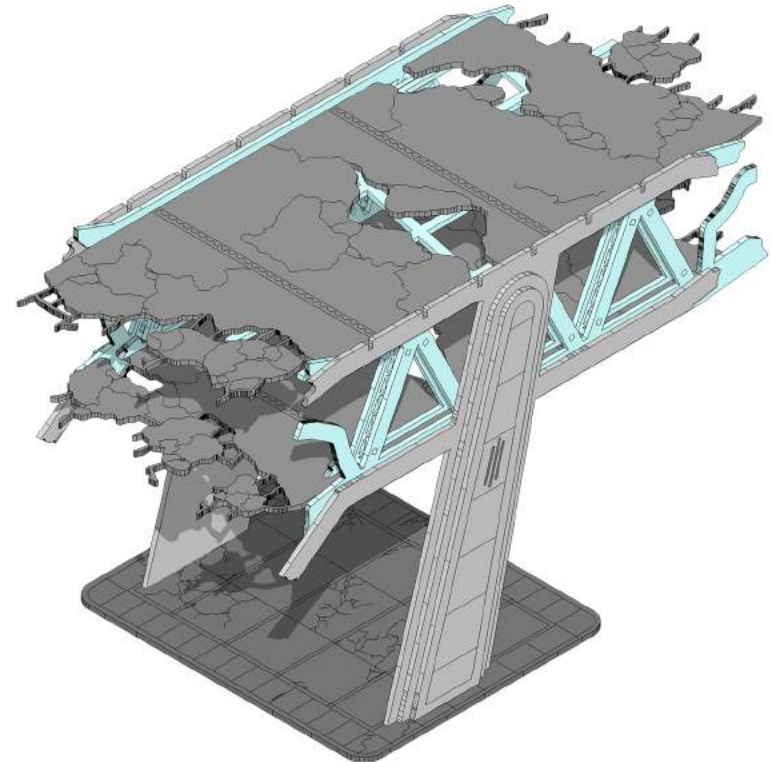


BROKEN HIGHWAY - HVN#1030

**GLUE TOP ROAD SUPPORT INTO HOLES PROVIDED.
(PART WILL LOOK A LITTLE DIFFERENT TO ONE SHOWN)**



**YOU CAN NOW SIT THE TOP ROAD ONTO THE PLATFORM.
IT'S A GOOD IDEA TO LEAVE THIS UNGLUED FOR EASIER GAMING**





BROKEN HIGHWAY - HVN#1030

