

THE MAY BUILDING - COM#2410

ASSEMBLY INSTRUCTIONS

Before starting this kit, make sure you read through all the instructions carefully. Always remember to dry fit parts and sand as needed.

We use two kinds of glue when assembling our kits. Super glue (cyanoacrylate) or PVA glue.

You can repaint or weather our kits easily! The paint we use is a great base primer and will take paint nicely.

If you have any issues during assembly, please contact us and we'll always help!

We would like to take the time to thank you for purchasing a Black Site Studios product!

www.blacksitestudio.com

WE SUGGEST HAVING THESE TOOLS ON HAND



IMPORTANT SYMBOLS YOU'LL FIND ON YOUR JOURNEY



ATTENTION



DRY FIT



NO GLUE



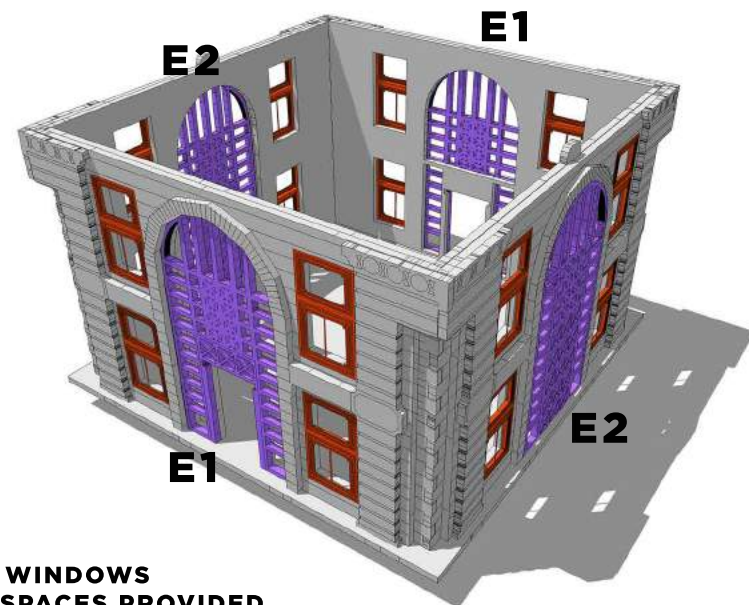
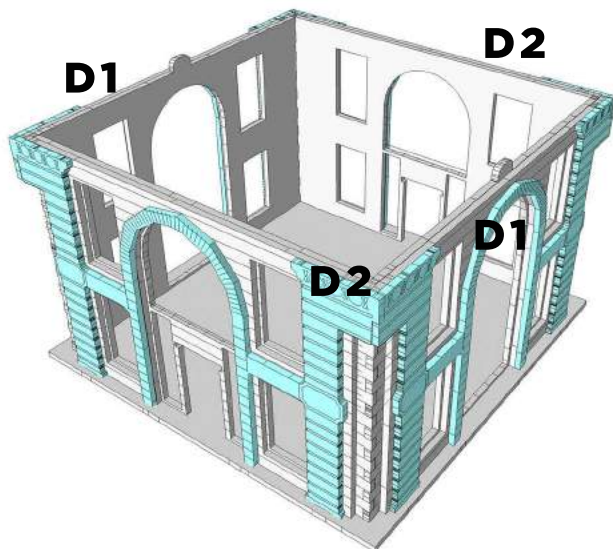
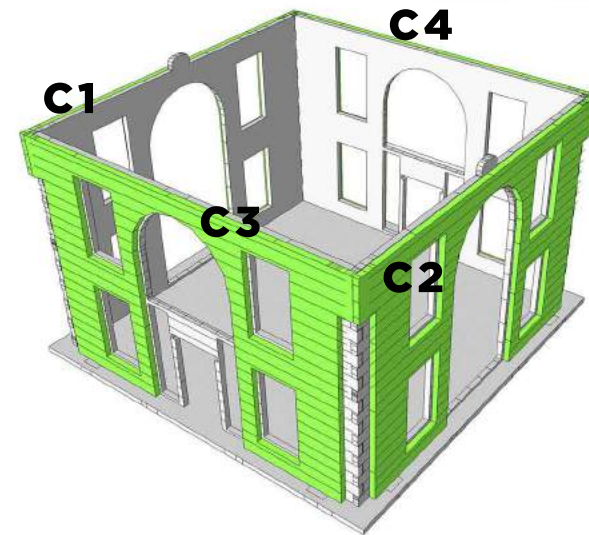
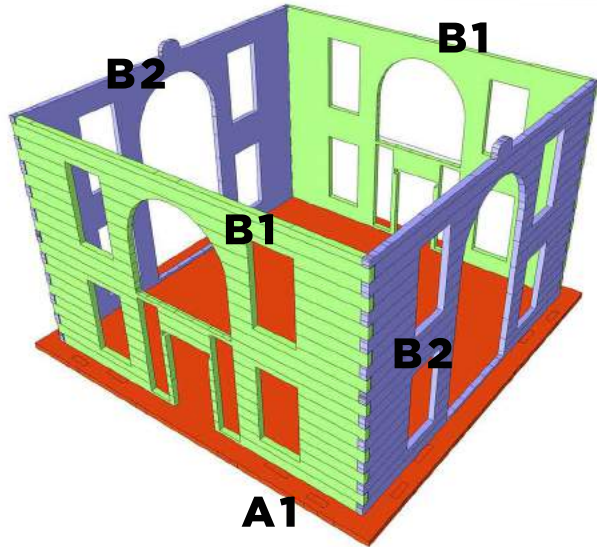
GLUE



TRIM/SAND

THE MAY BUILDING - COM#2410

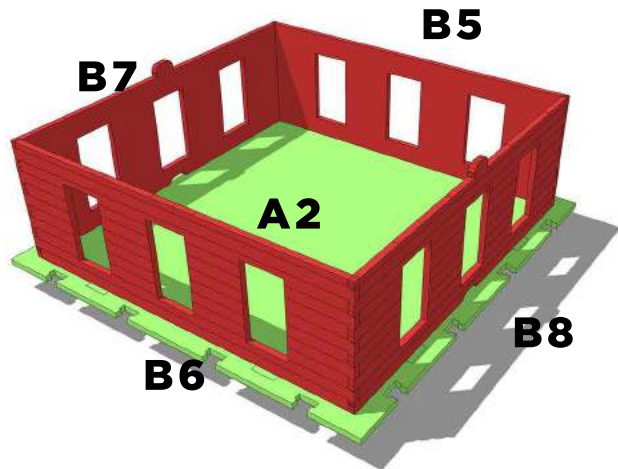
PAGE 1



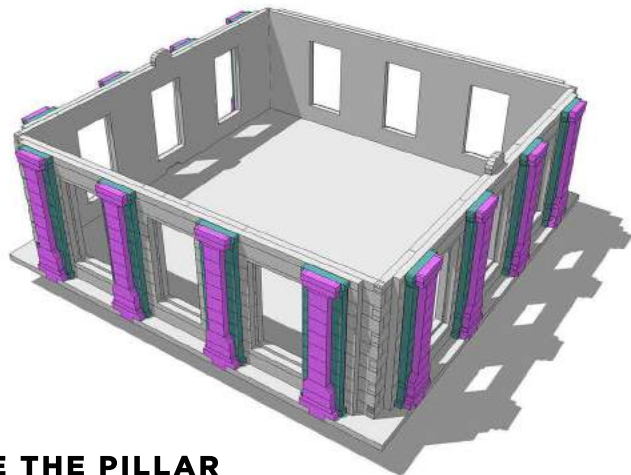
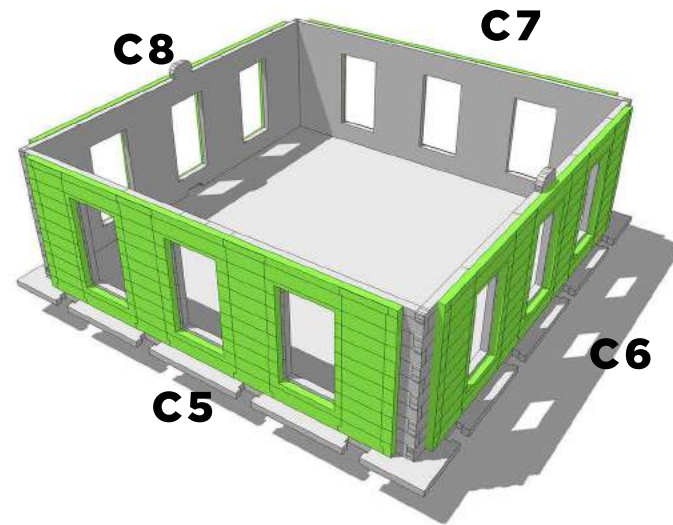
GLUE WINDOWS
INTO SPACES PROVIDED

THE MAY BUILDING - COM#2410

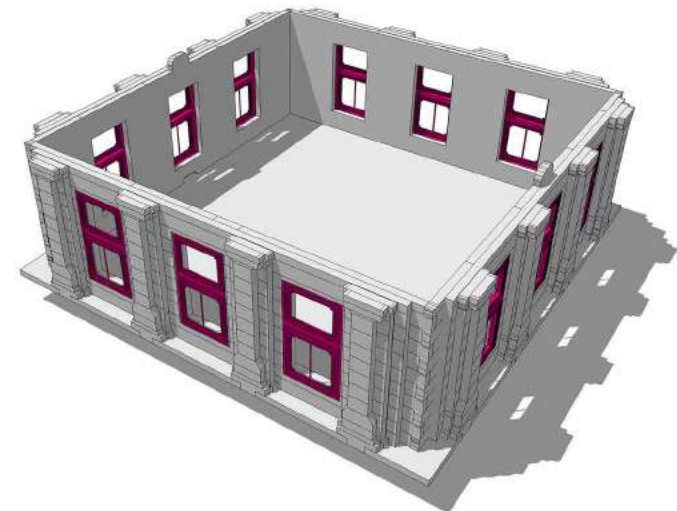
PAGE 2



NOW ITS TIME TO ASSEMBLE THE
MAIN FLOORS. YOU'LL HAVE ENOUGH
PARTS TO MAKE 3 OF THESE



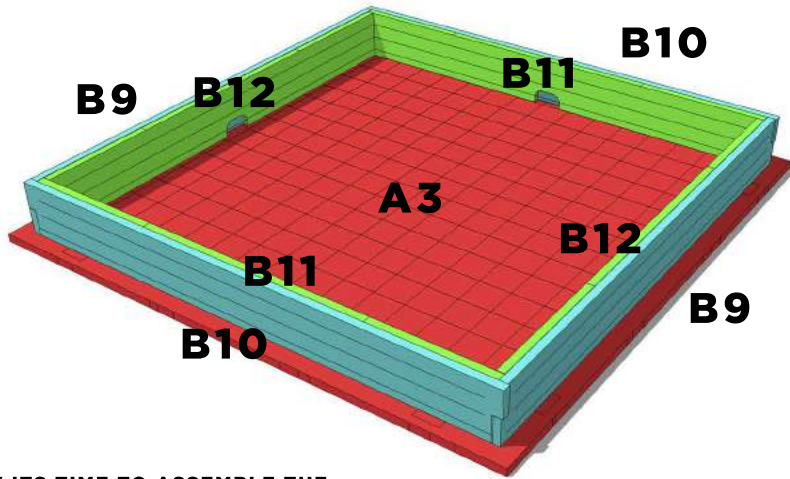
PLACE THE PILLAR
PARTS D5 & D8



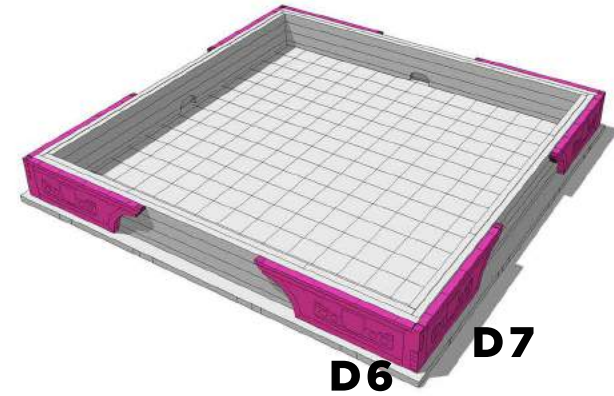
PLACE WINDOWS

THE MAY BUILDING - COM#2410

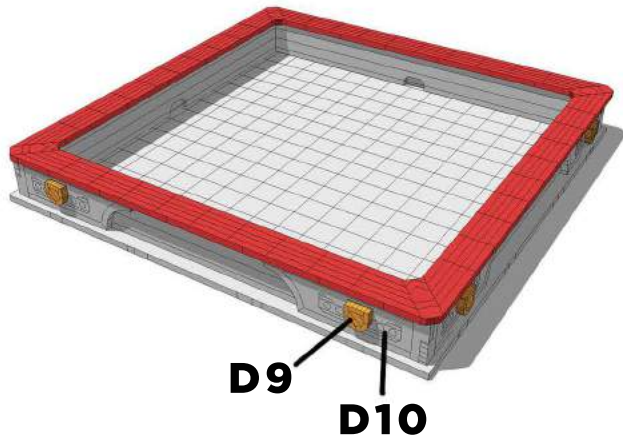
PAGE 3



NOW ITS TIME TO ASSEMBLE THE ROOF



ROOF CAP



GLUE THE TWO DOOR HALVES TOGETHER AND ADD ON THE PUSH BARS.

THEN SLOT THE DOOR INTO THE DOOR HINGE. DONT APPLY GLUE IN THE HOLES THE DOORS ARE DESIGNED TO WORK

