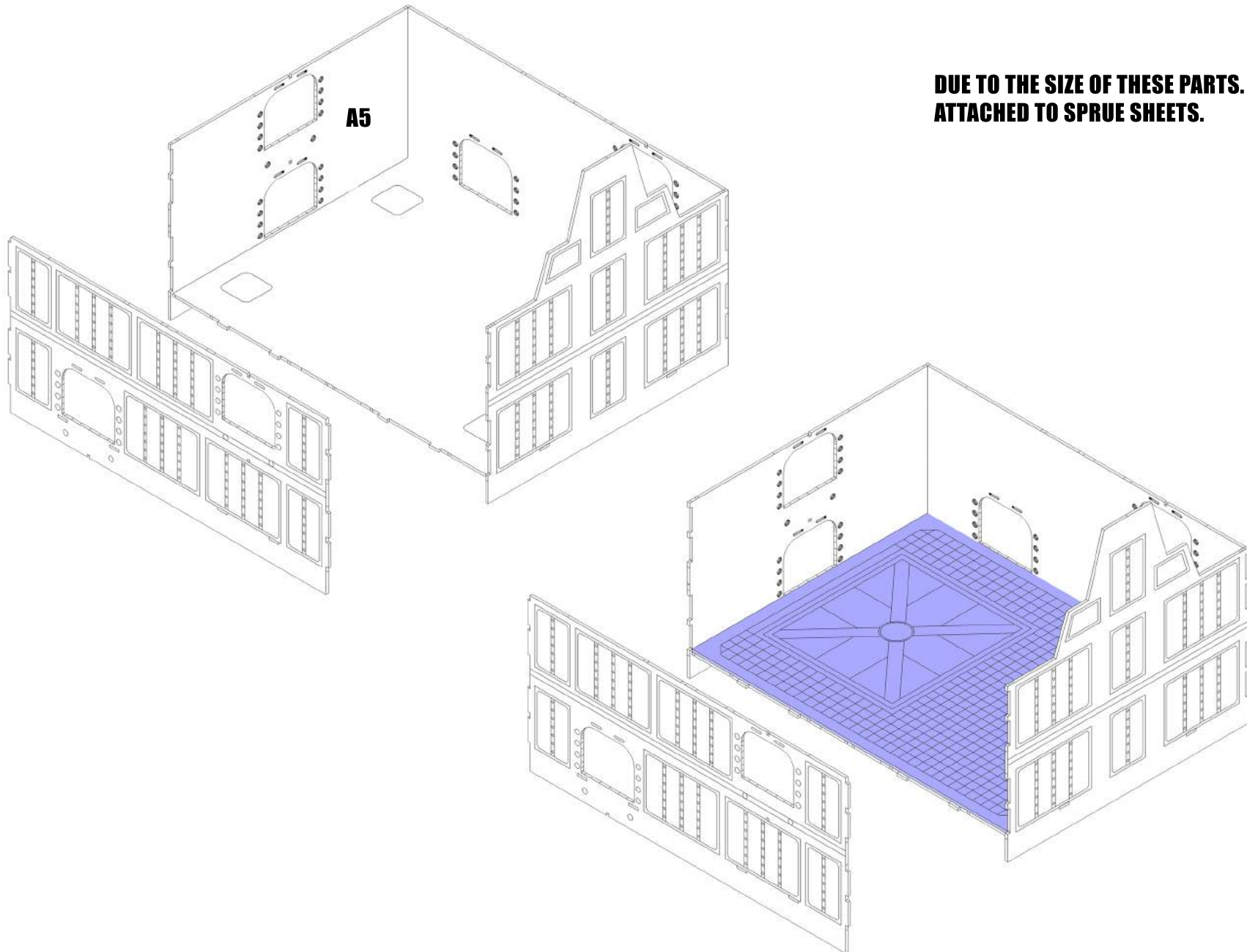




# THE ARK - ATRIUM - HVN#1022

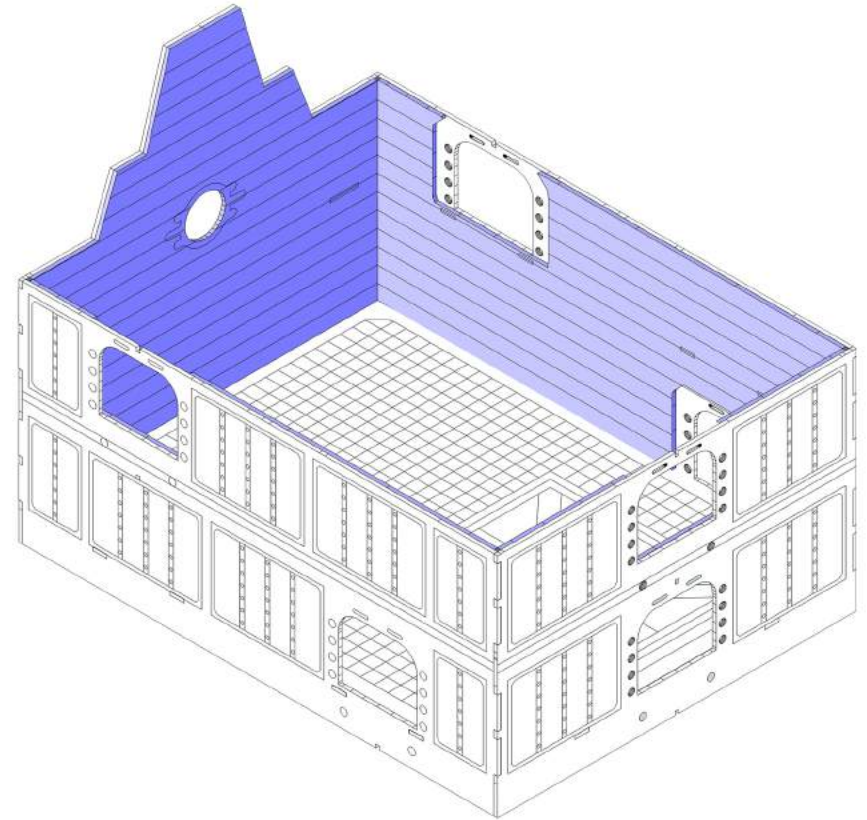
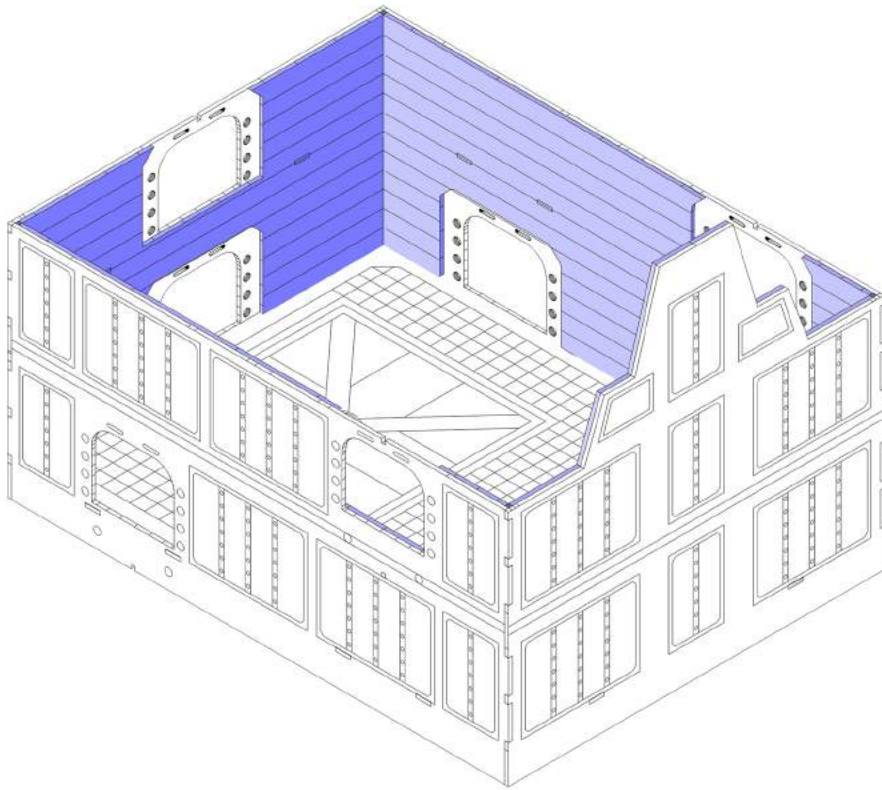
**DUE TO THE SIZE OF THESE PARTS. THEY AREN'T ATTACHED TO SPRUE SHEETS.**





# THE ARK - ATRIUM - HVN#1022

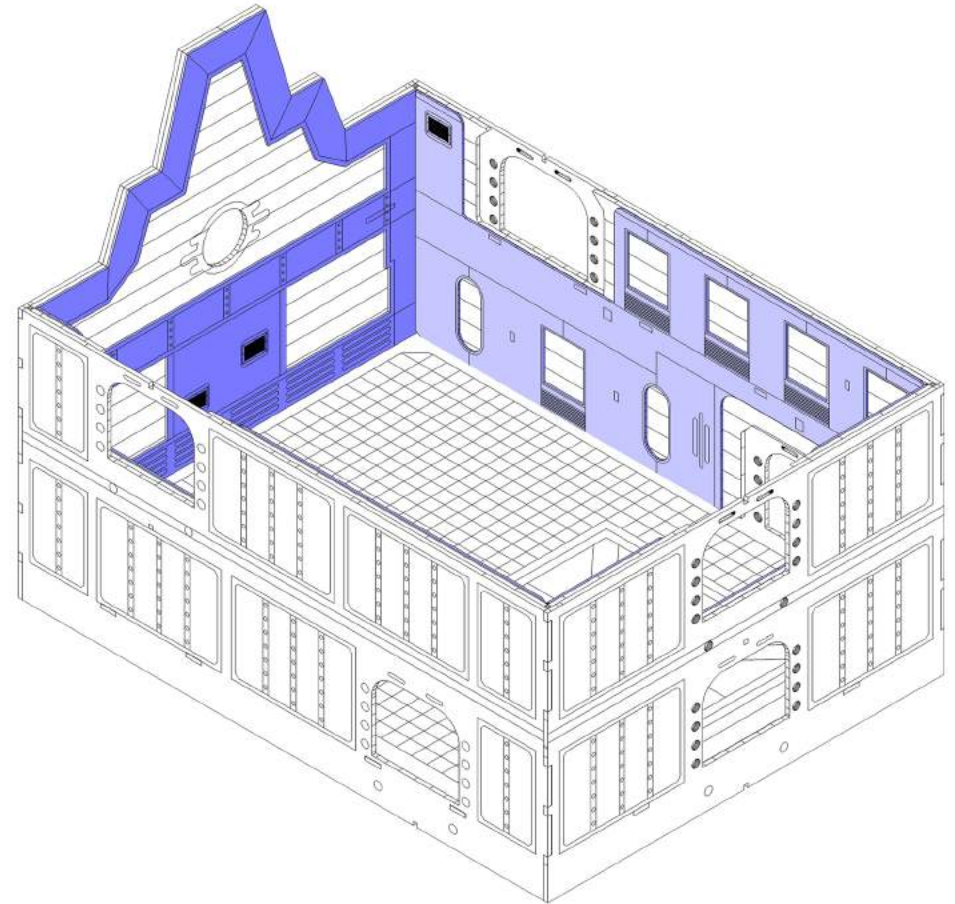
**DUE TO THE SIZE OF THESE PARTS  
THEYRE NOT ATTACHED TO SPRUE SHEETS.  
MAKE SURE TO TEST FIT THESE AND LINE THEM UP WITH  
THE DOOR OPENINGS.**





# THE ARK - ATRIUM - HVN#1022

**THESE LARGE CARD PARTS CAN BE TRICKY TO GLUE DOWN. WHEN GLUING DOWN WITH WATER BASED GLUE, MAKE SURE TO CLAMP THEM WITH SOMETHING, OTHERWISE THEY HAVE A TENDENCY TO WARP.**

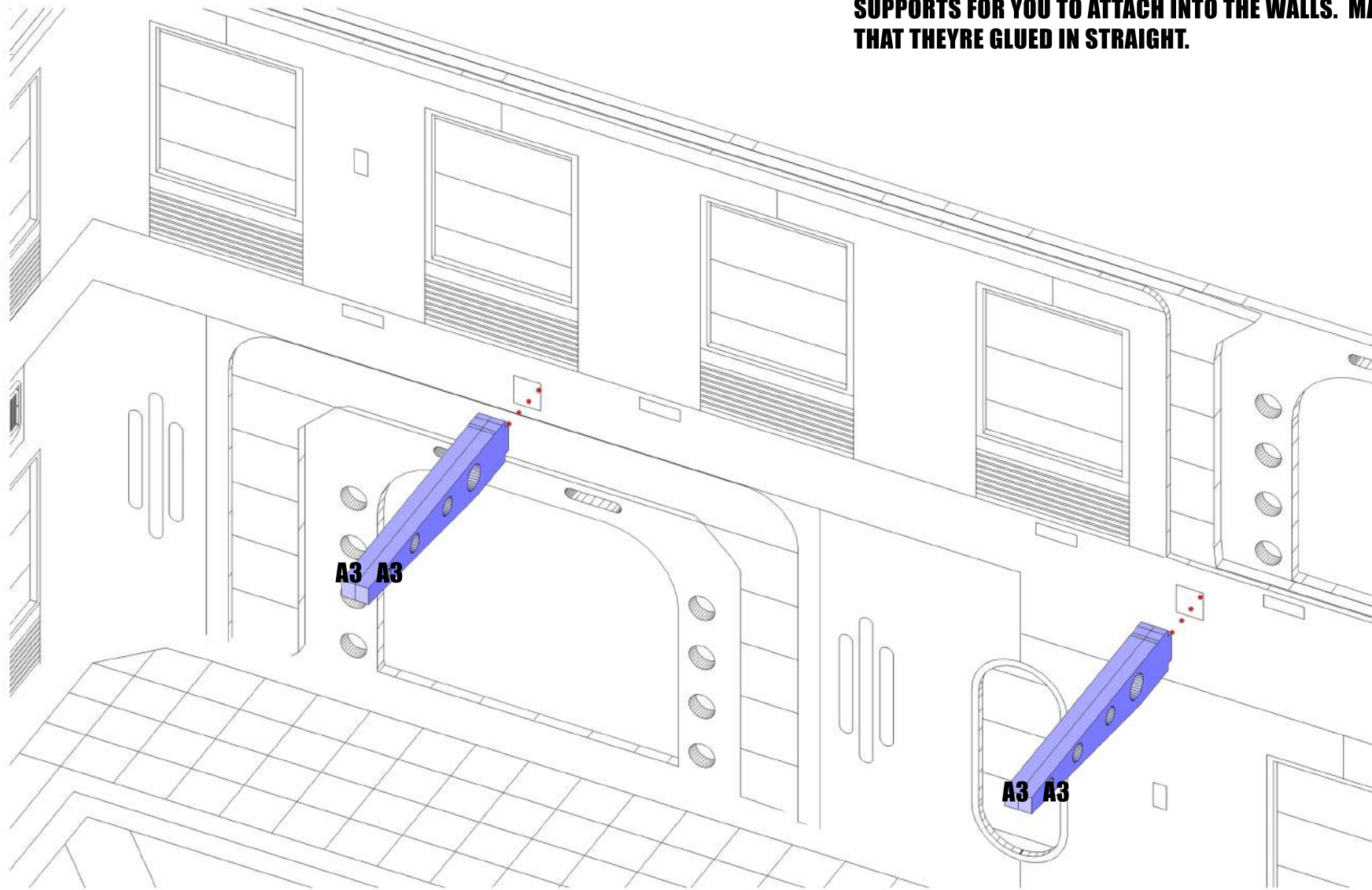






# THE ARK - ATRIUM - HVN#1022

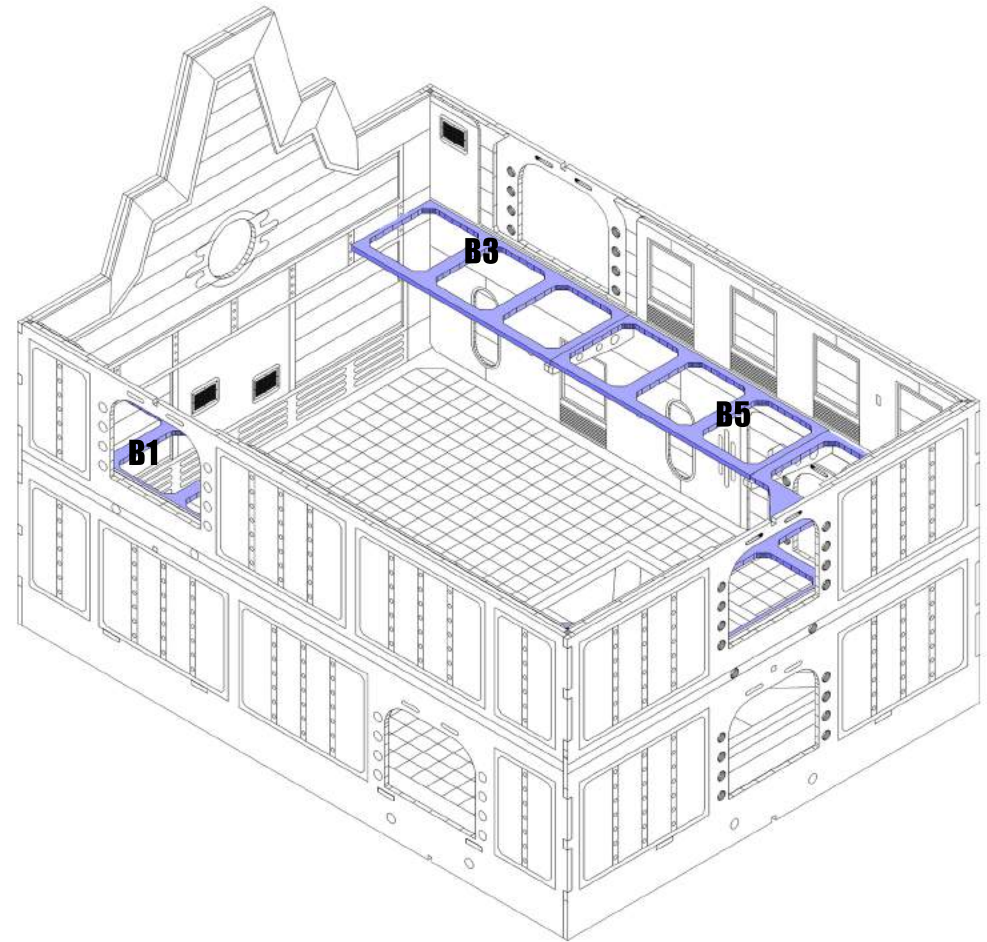
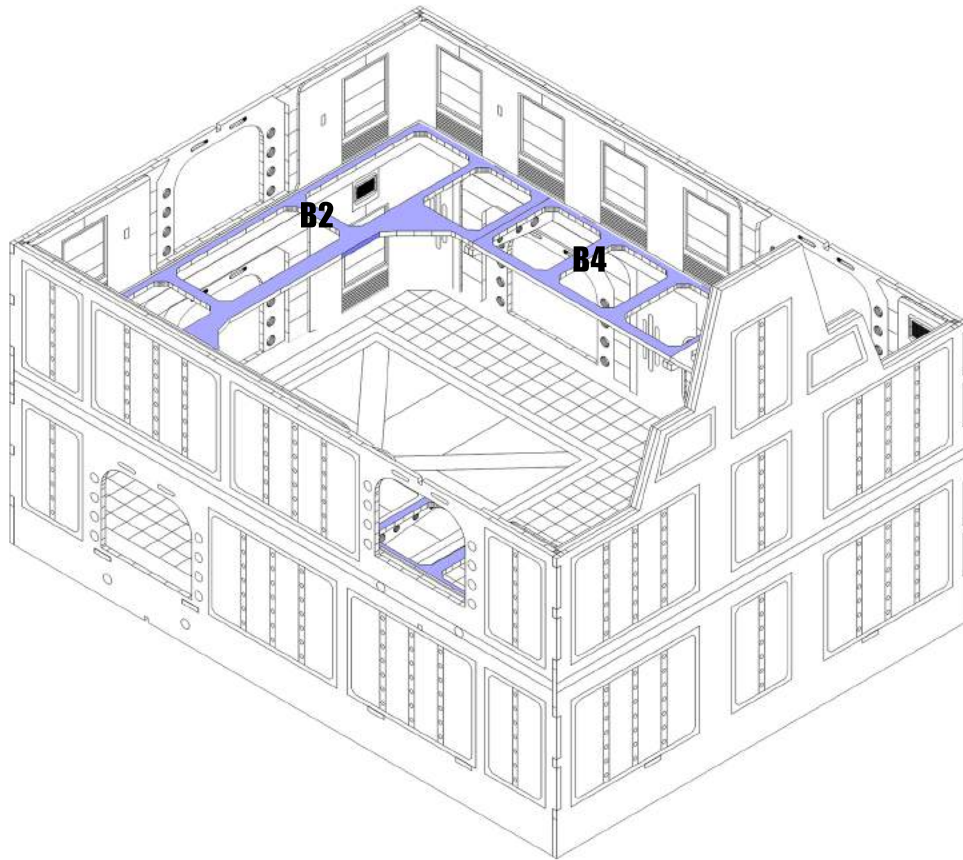
**GLUE PARTS A3 TOGETHER. THIS WILL CREATE THE WALKWAY SUPPORTS FOR YOU TO ATTACH INTO THE WALLS. MAKE SURE THAT THEYRE GLUED IN STRAIGHT.**





# THE ARK - ATRIUM - HVN#1022

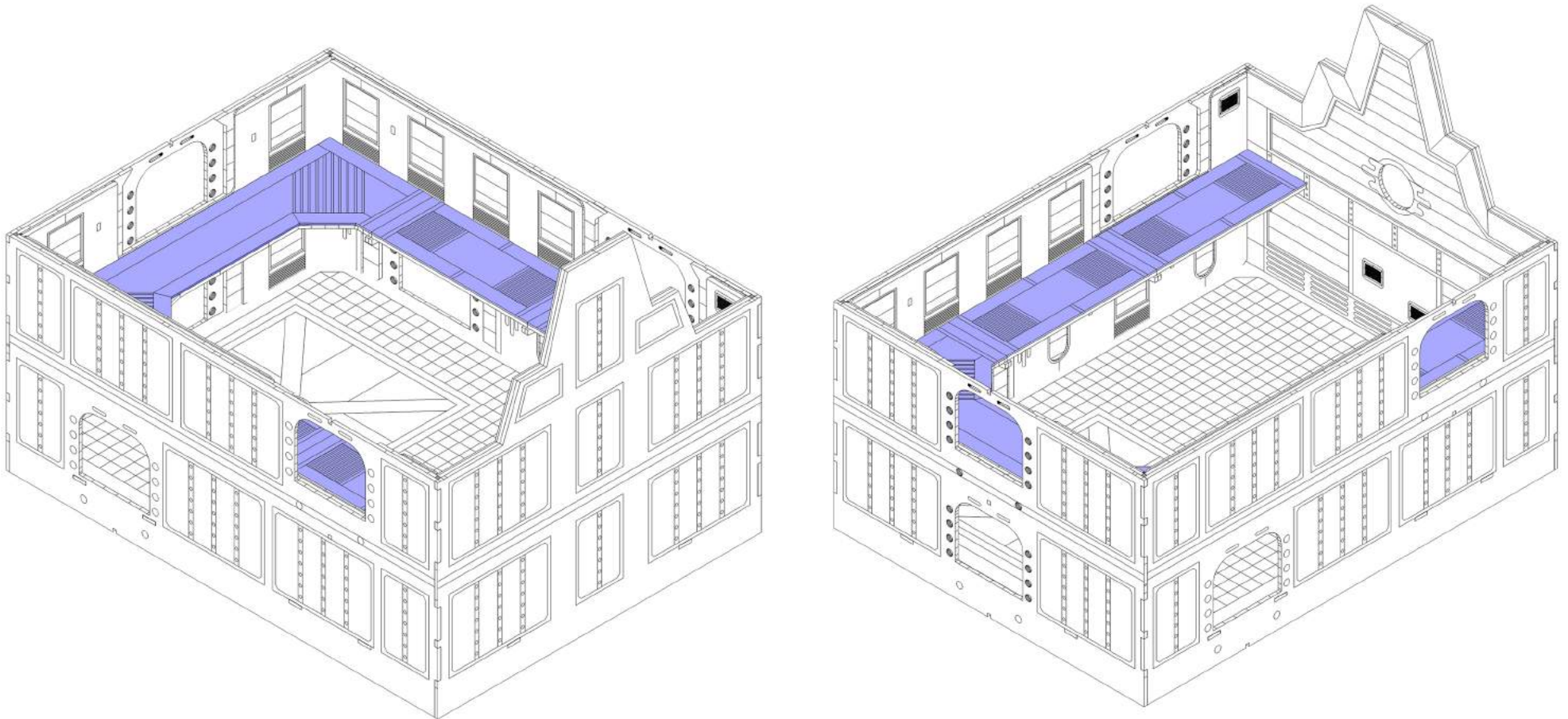
**WALKWAY SECTIONS B4 & B5 CAN BE LEFT  
UNGLUED FOR EASY ACCESS. THEY WILL REST  
ONTOP OF THE SUPPORTS.**





# THE ARK - ATRIUM - HVN#1022

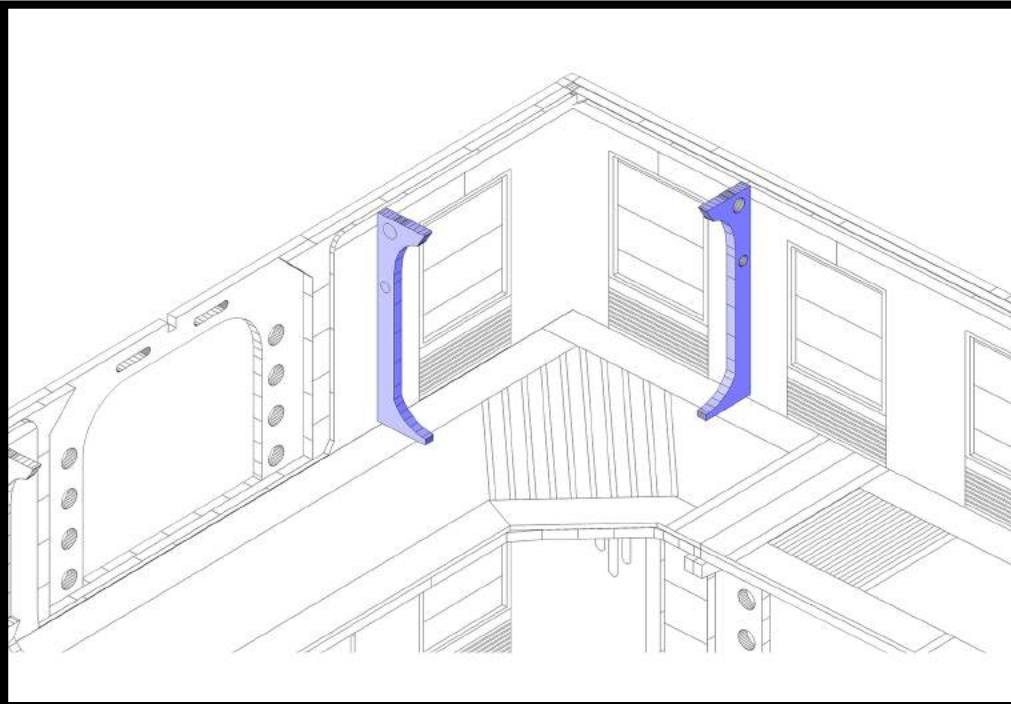
**ATTACH TOP PLATES TO THE WALKWAYS**



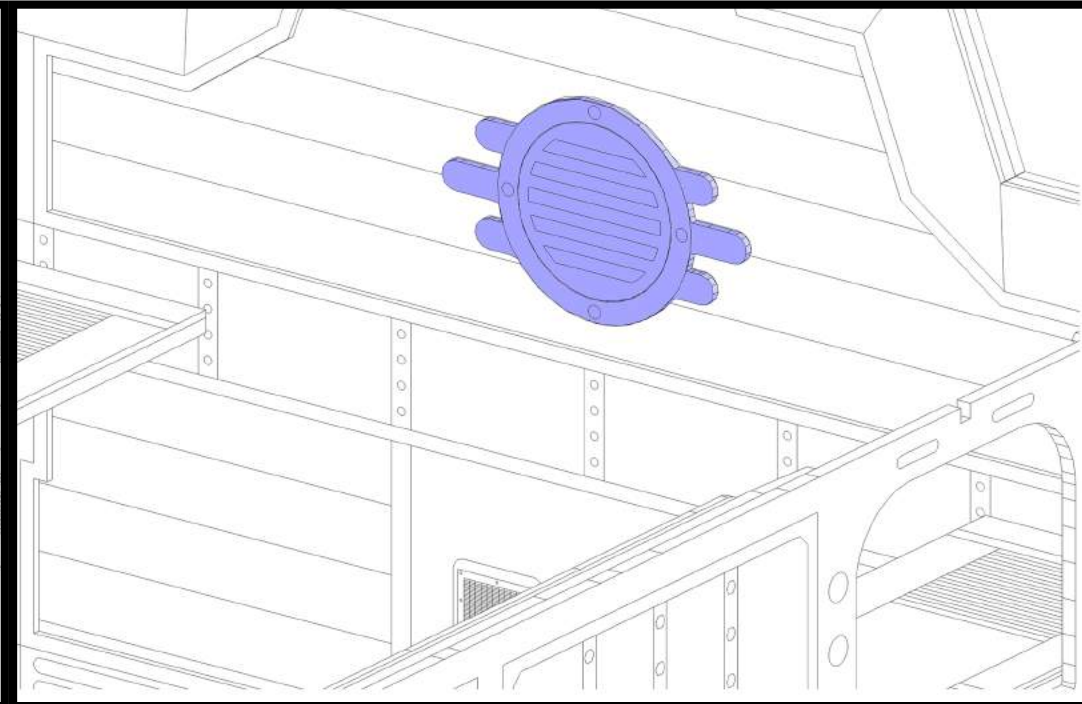




# THE ARK - ATRIUM - HVN#1022



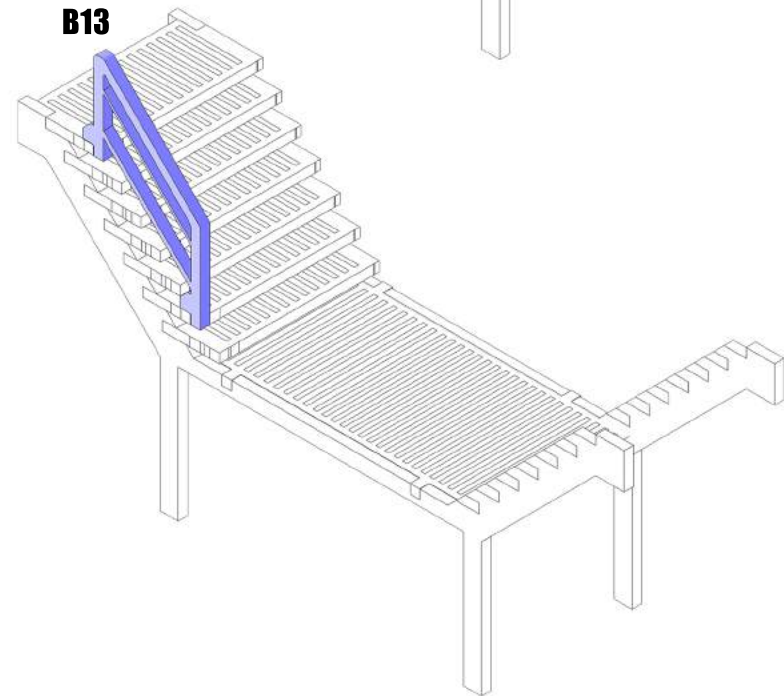
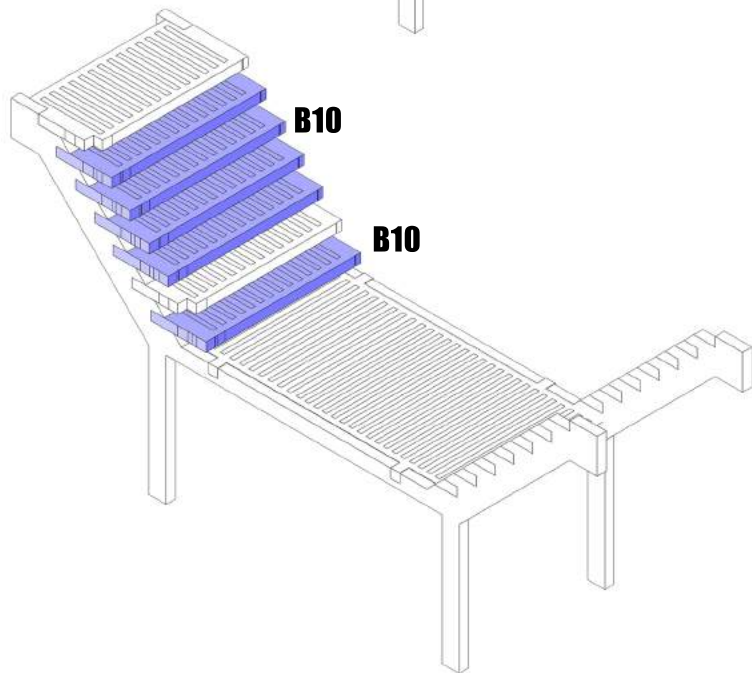
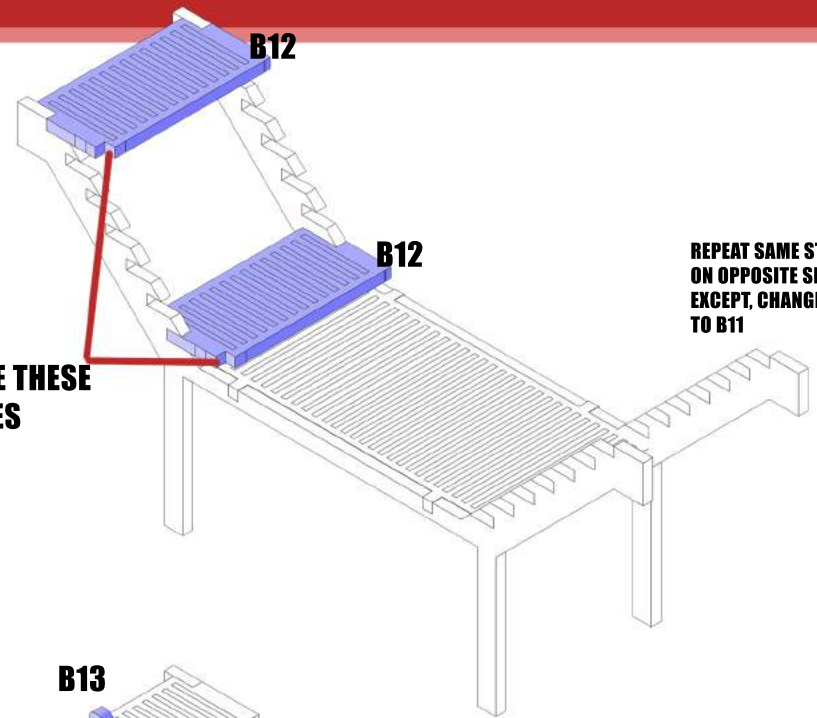
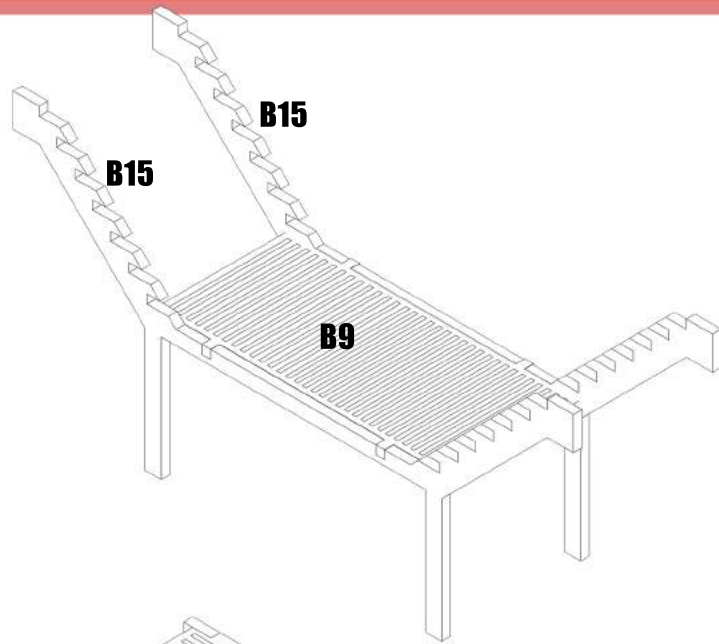
**ATTACH WALL SUPPORTS, THERE IS VARIOUS HOLES ON BOTH FLOORS FOR THEM**



**GLUE IN WALL VENT DETAIL**



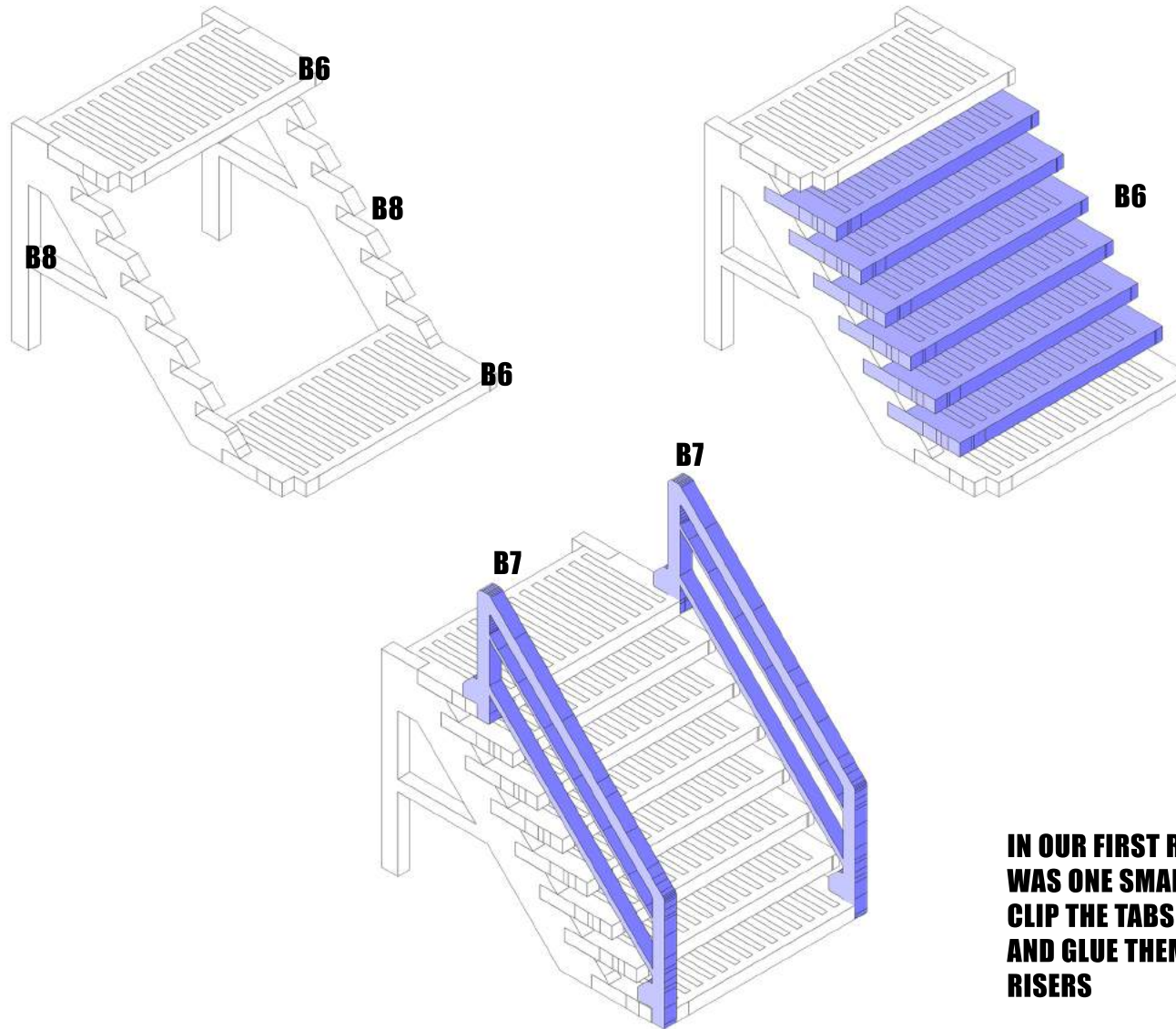
# THE ARK - ATRIUM - HVN#1022







# THE ARK - ATRIUM - HVN#1022



**IN OUR FIRST RUN OF THESE KITS, THERE WAS ONE SMALL ERROR. YOU'LL NEED TO CLIP THE TABS OFF THESE STAIR RAILS AND GLUE THEM DIRECTLY TO THE STAIR RISERS**