

# MAXWELL LAW FIRM - COM#2411

## ASSEMBLY INSTRUCTIONS

**Before starting this kit, make sure you read through all the instructions carefully. Always remember to dry fit parts and sand as needed.**

**We use two kinds of glue when assembling our kits. Super glue (cyanoacrylate) or PVA glue.**

**You can repaint or weather our kits easily! The paint we use is a great base primer and will take paint nicely.**

**If you have any issues during assembly, please contact us and we'll always help!**

**We would like to take the time to thank you for purchasing a Black Site Studios product!**

**[www.blacksitestudio.com](http://www.blacksitestudio.com)**

### WE SUGGEST HAVING THESE TOOLS ON HAND



### IMPORTANT SYMBOLS YOU'LL FIND ON YOUR JOURNEY



ATTENTION



DRY FIT



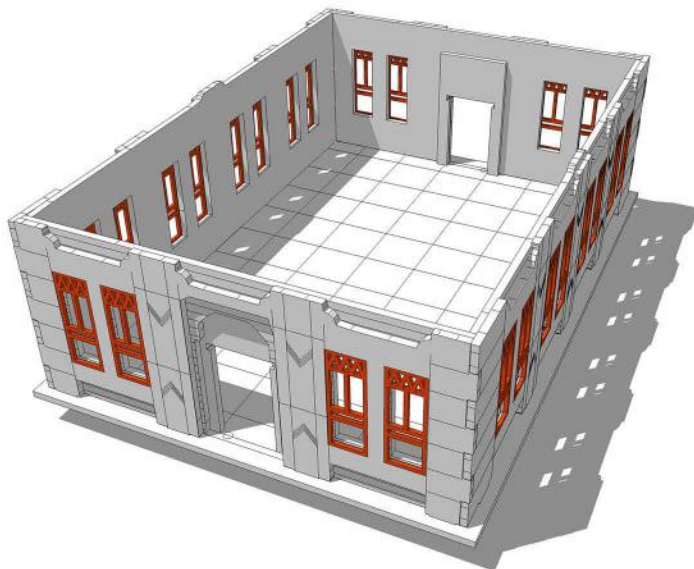
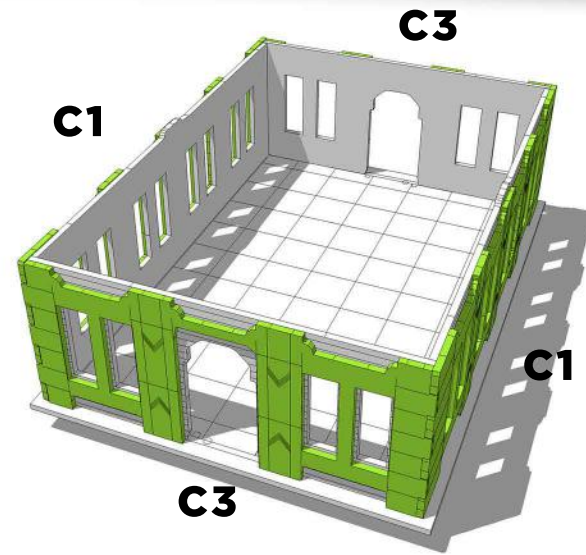
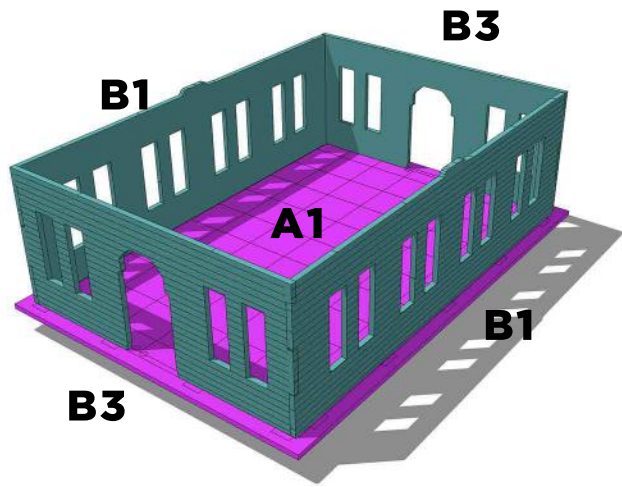
NO GLUE



GLUE



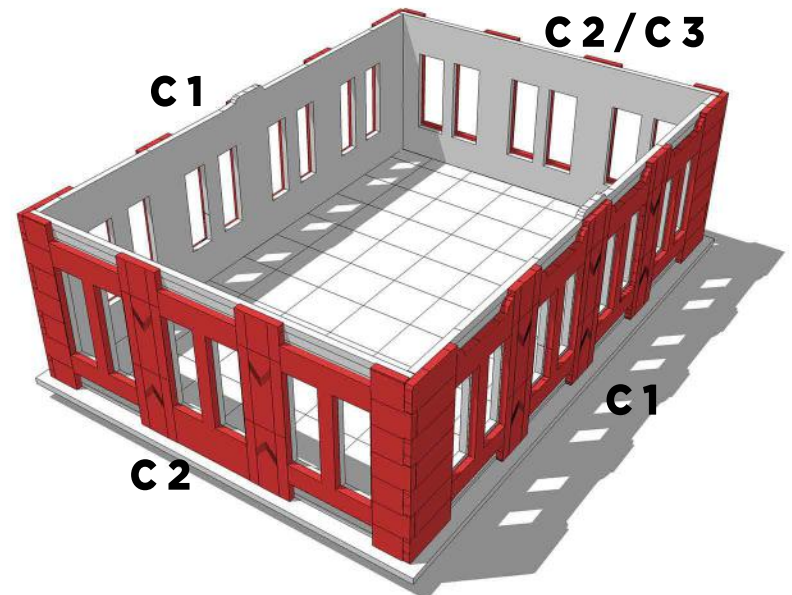
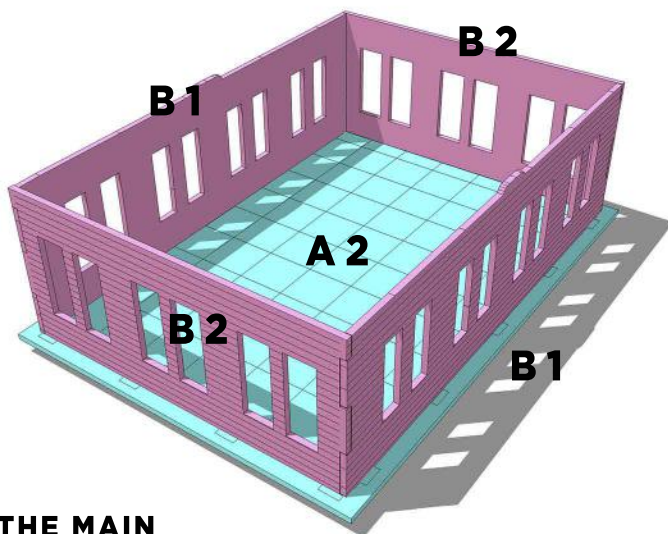
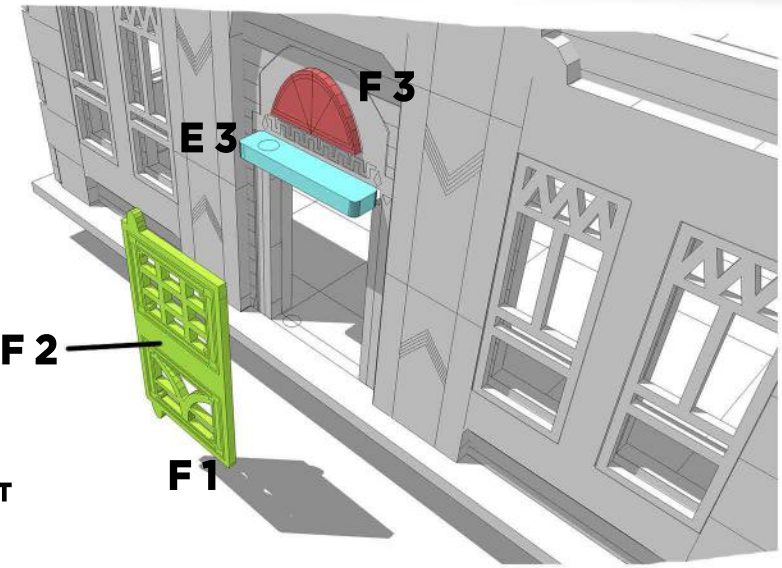
TRIM/SAND



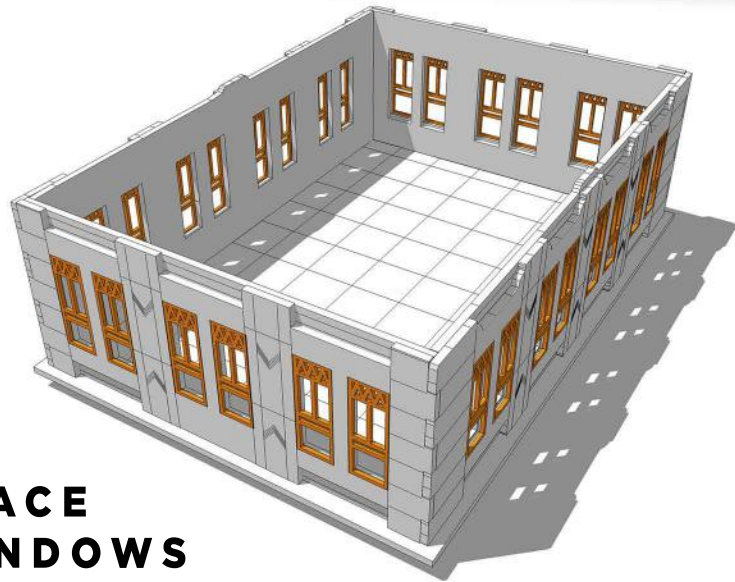
**PLACE WINDOWS**



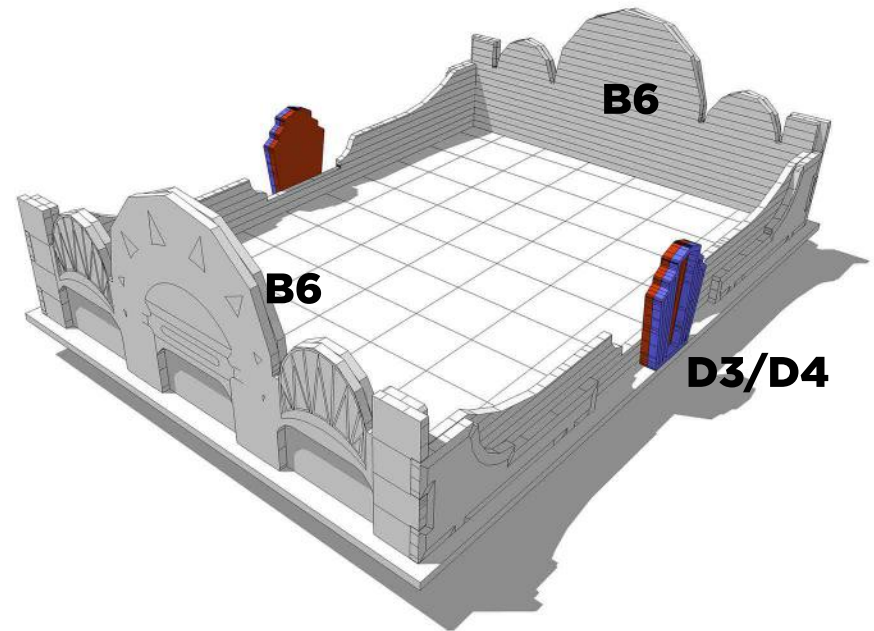
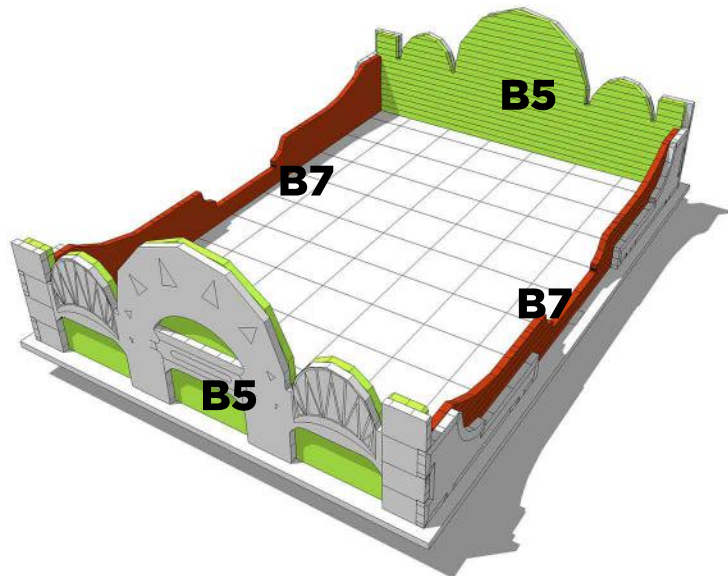
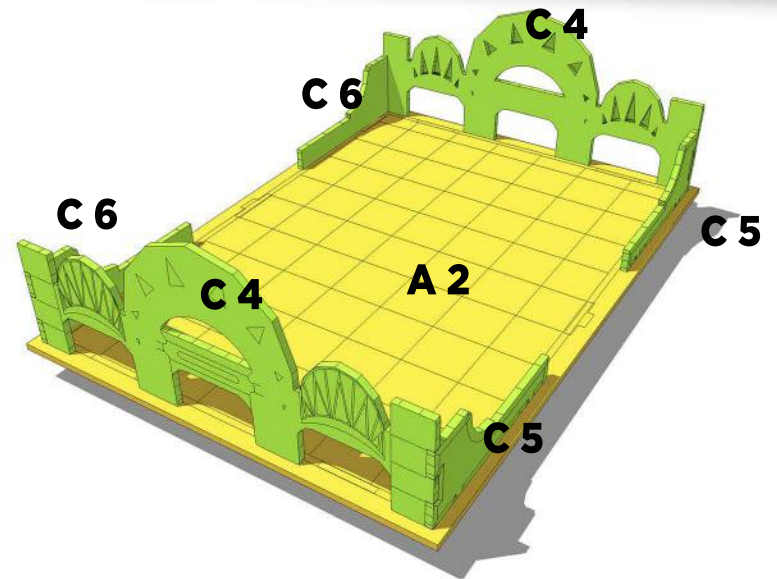
THE DOOR IS DESIGNED TO OPEN AND CLOSE. DO NOT GLUE

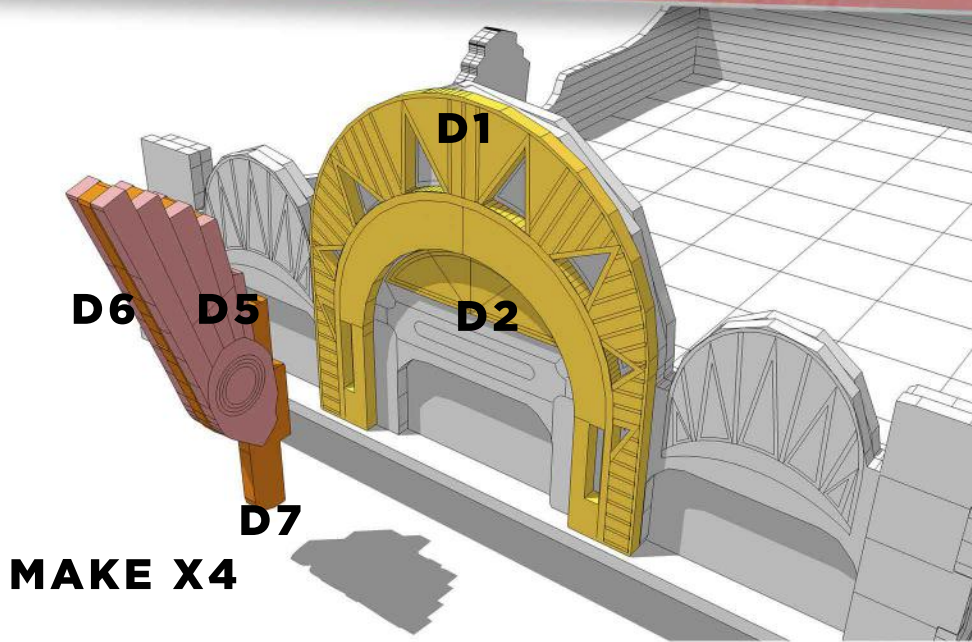


ASSEMBLE THE MAIN FLOORS. YOU WILL HAVE 3 OF THESE



**PLACE  
WINDOWS**





**MAKE 4X**

