

84 MAUJER ST - COM#2415

ASSEMBLY INSTRUCTIONS

Before starting this kit, make sure you read through all the instructions carefully. Always remember to dry fit parts and sand as needed.

We use two kinds of glue when assembling our kits. Super glue (cyanoacrylate) or PVA glue.

You can repaint or weather our kits easily! The paint we use is a great base primer and will take paint nicely.

If you have any issues during assembly, please contact us and we'll always help!

We would like to take the time to thank you for purchasing a Black Site Studios product!

www.blacksitestudio.com

WE SUGGEST HAVING THESE TOOLS ON HAND



IMPORTANT SYMBOLS YOU'LL FIND ON YOUR JOURNEY



ATTENTION



DRY FIT



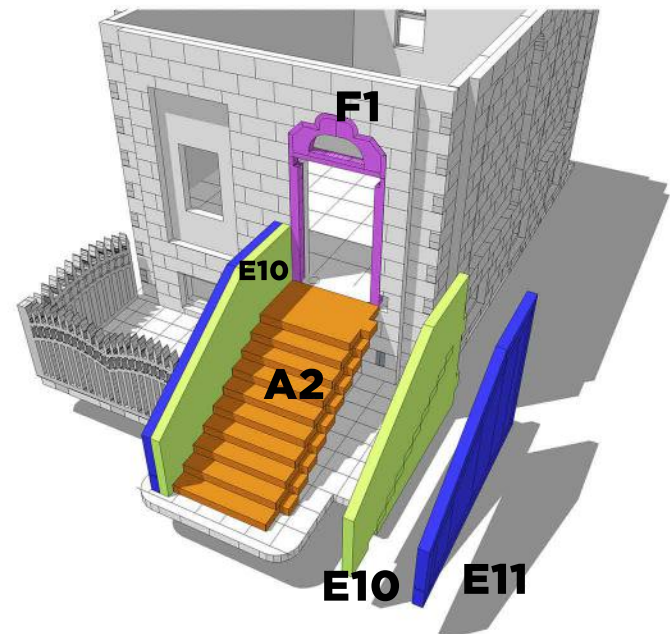
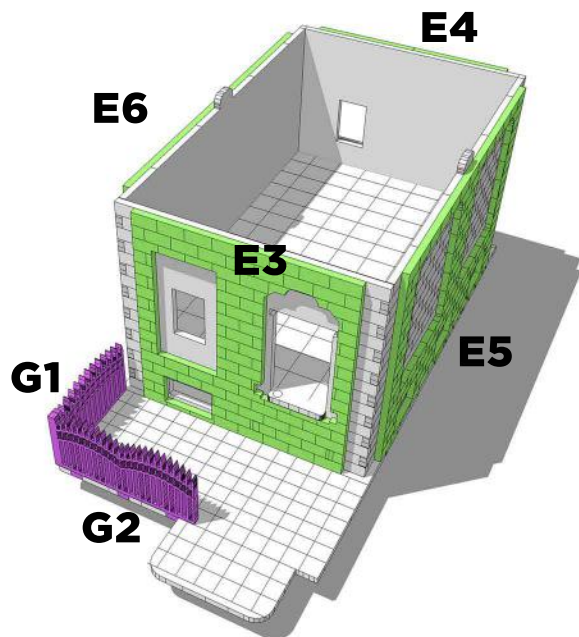
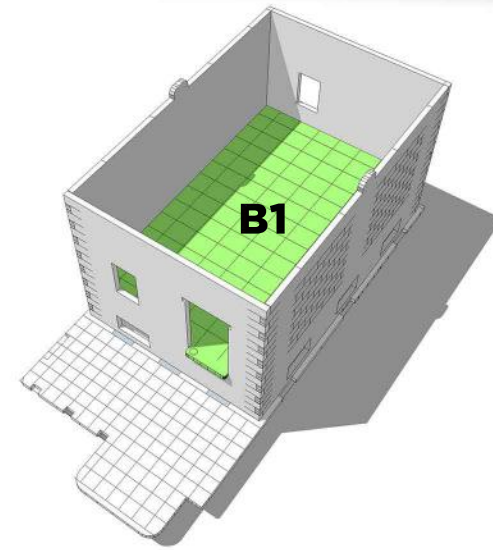
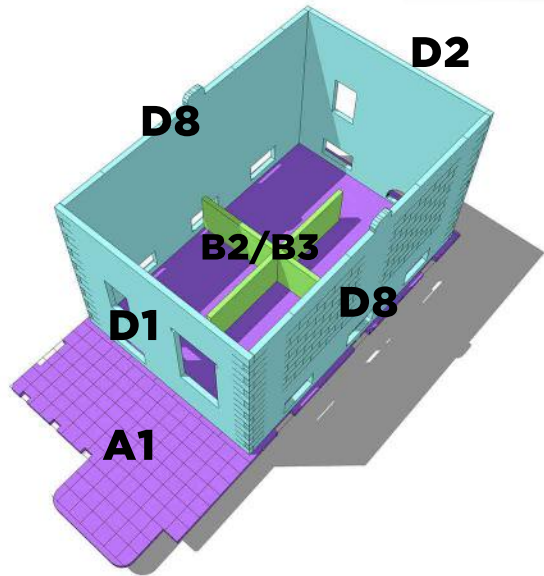
NO GLUE



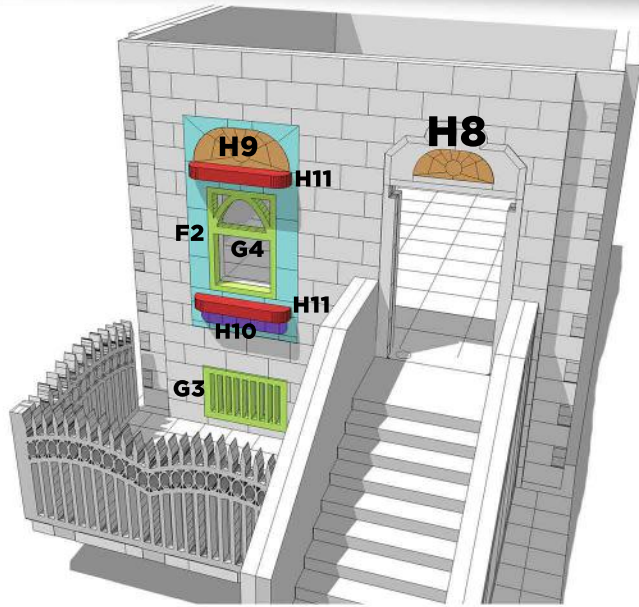
GLUE



TRIM/SAND



ITS OFTEN
EASIER TO
ASSEMBLE
THE STAIRS
SEPARATELY
AND GLUE
THEM ON AFTER



DOOR IS
DESIGNED
TO OPEN
AND CLOSE.

