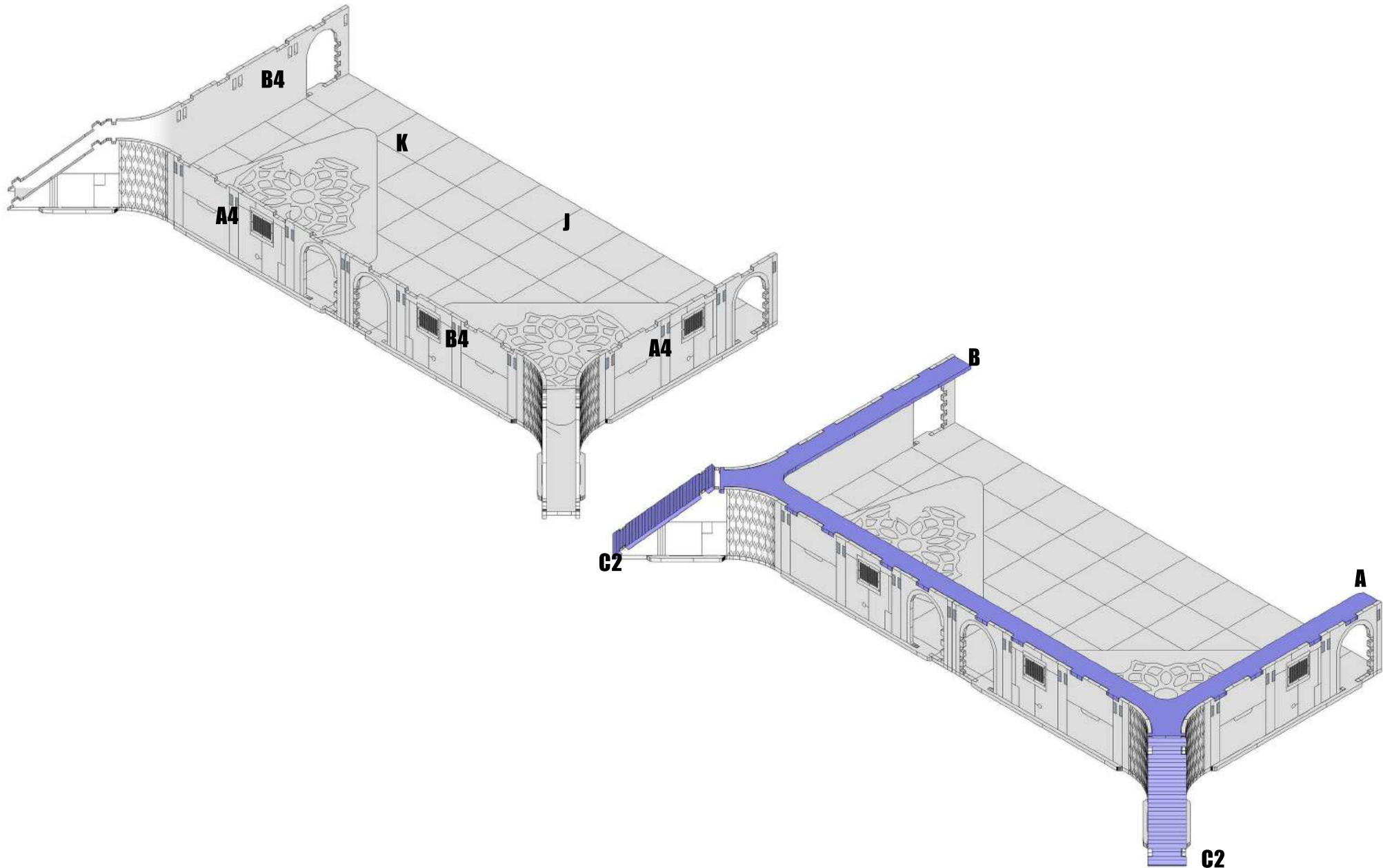


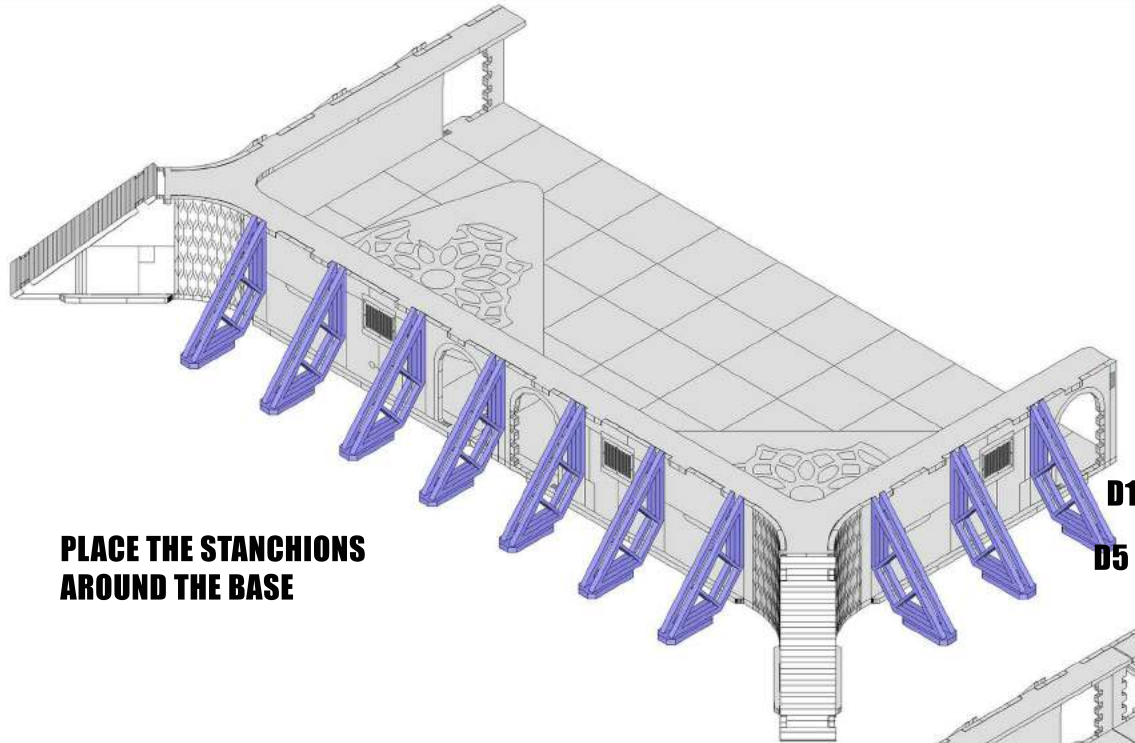


PBS HEADQUARTERS



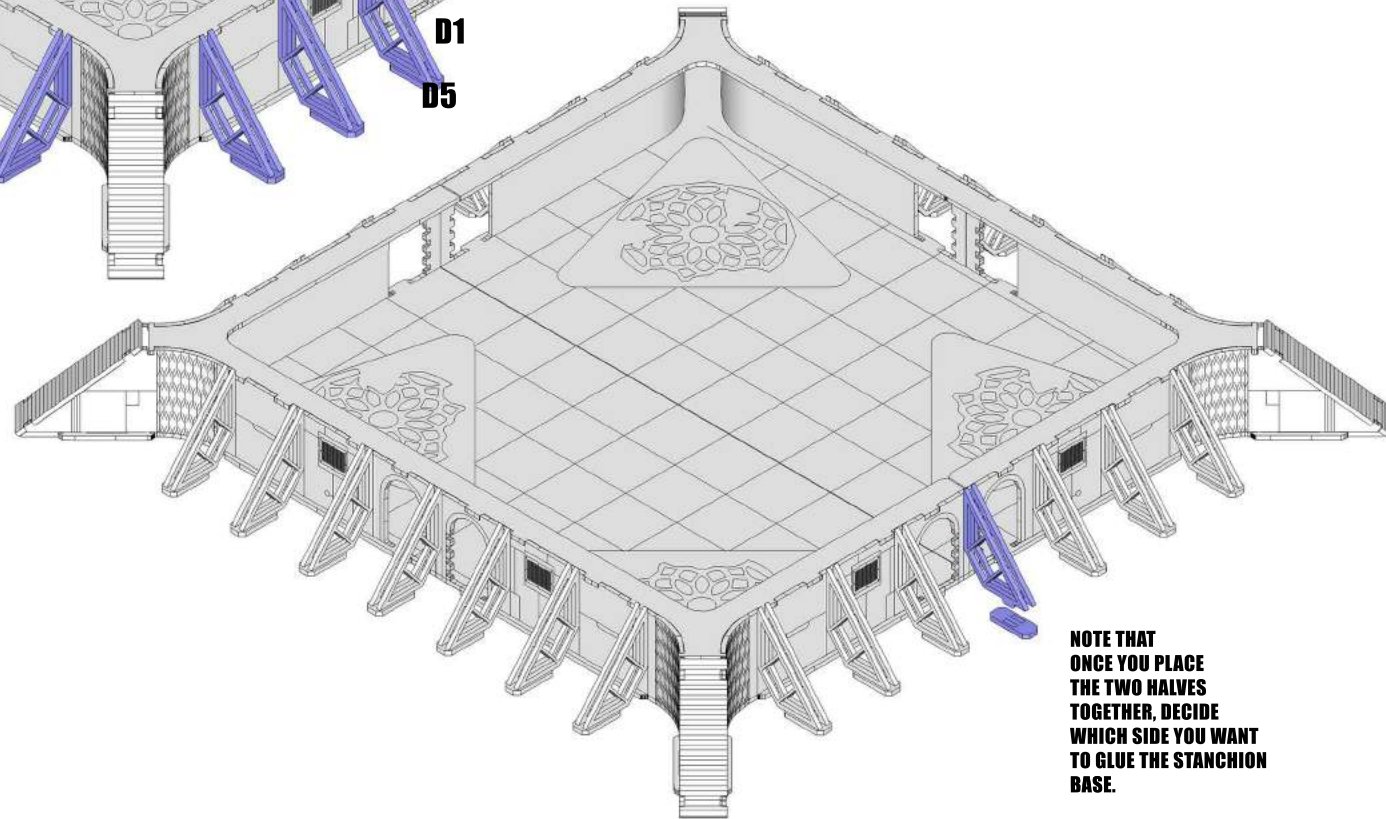


PBS HEADQUARTERS



**PLACE THE STANCHIONS
AROUND THE BASE**

**REPEAT THE SAME STEPS FOR THE
OTHER HALF, ITS IDENTICAL TO THE FIRST
HALF. YOU CAN LEAVE THE TWO HALVES
UNGLUED OR YOU CAN FIX THEM TOGETHER**

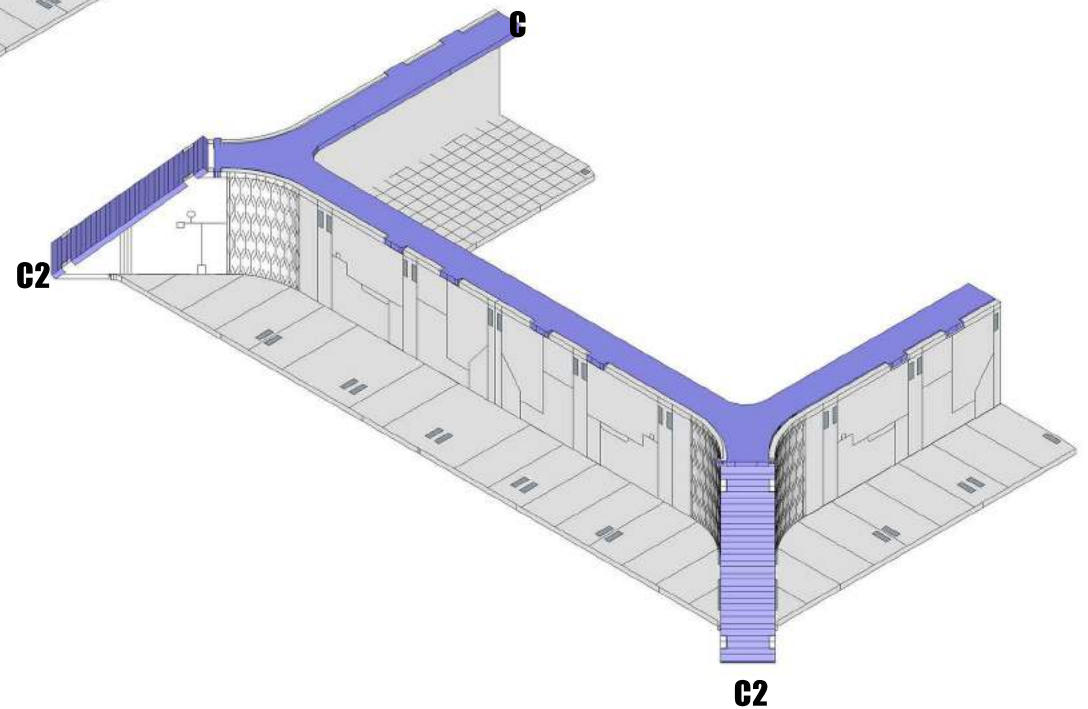
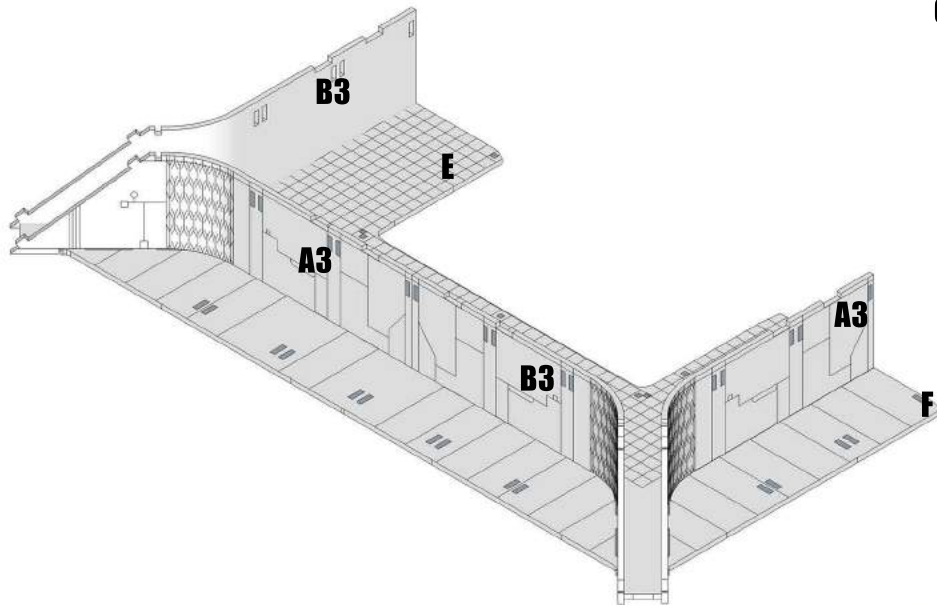


**NOTE THAT
ONCE YOU PLACE
THE TWO HALVES
TOGETHER, DECIDE
WHICH SIDE YOU WANT
TO GLUE THE STANCHION
BASE.**



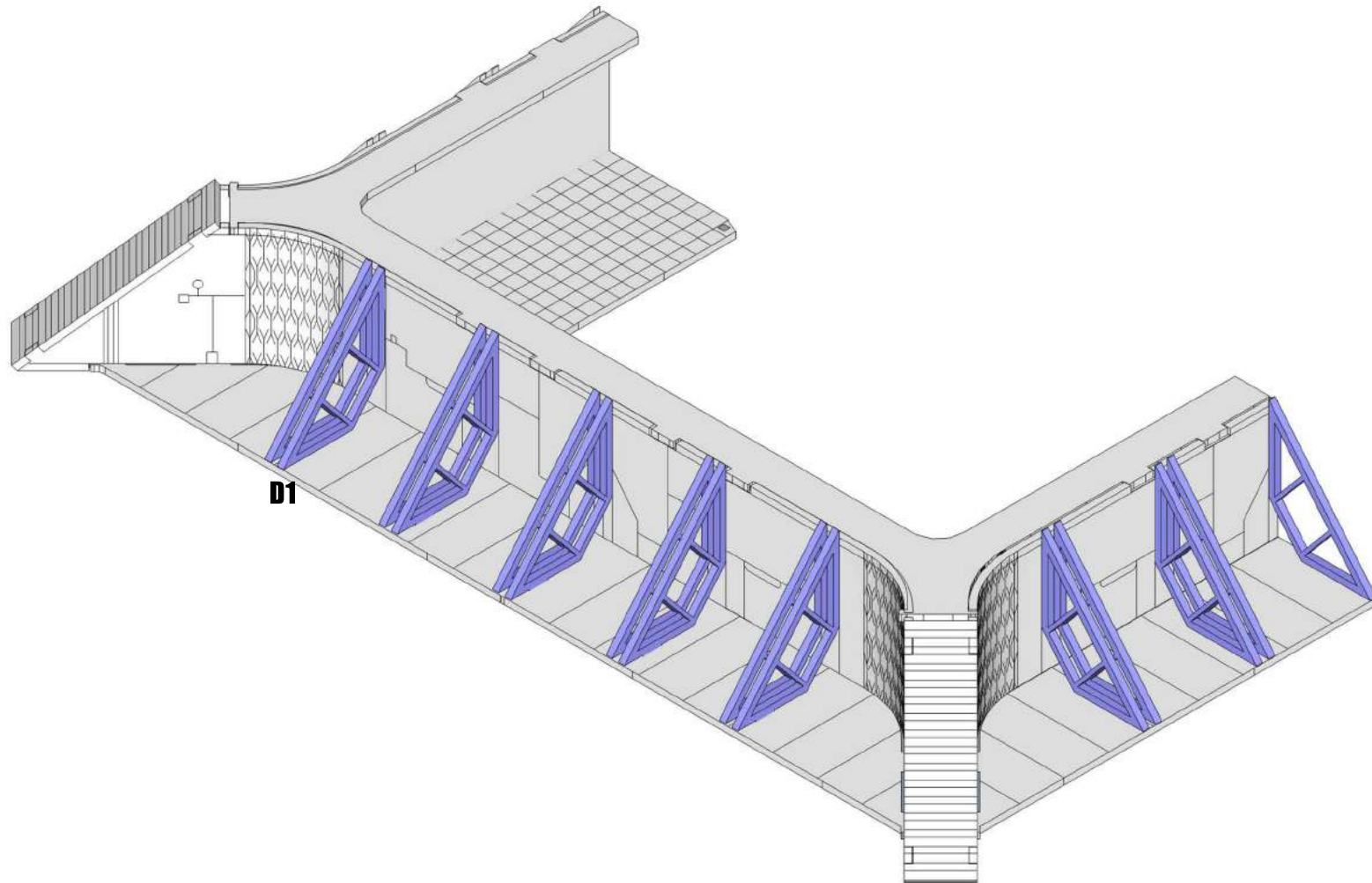
PBS HEADQUARTERS

YOU'LL NOTICE THAT THE DIFFERENT LEVELS USE A VERY SIMILAR TYPE OF DESIGN. A LOT OF IT IS JUST REPEATING THE SAME STEPS



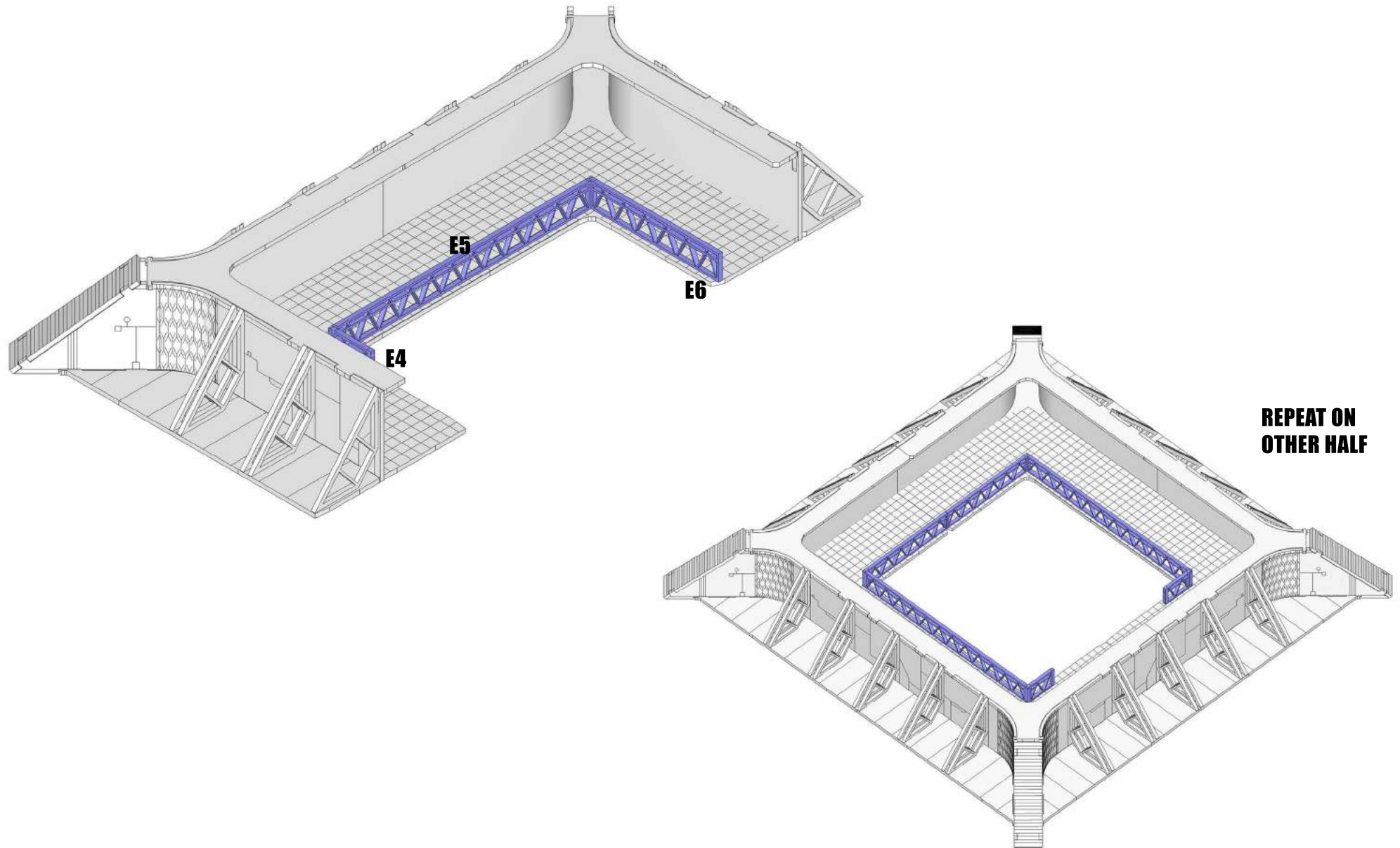


PBS HEADQUARTERS



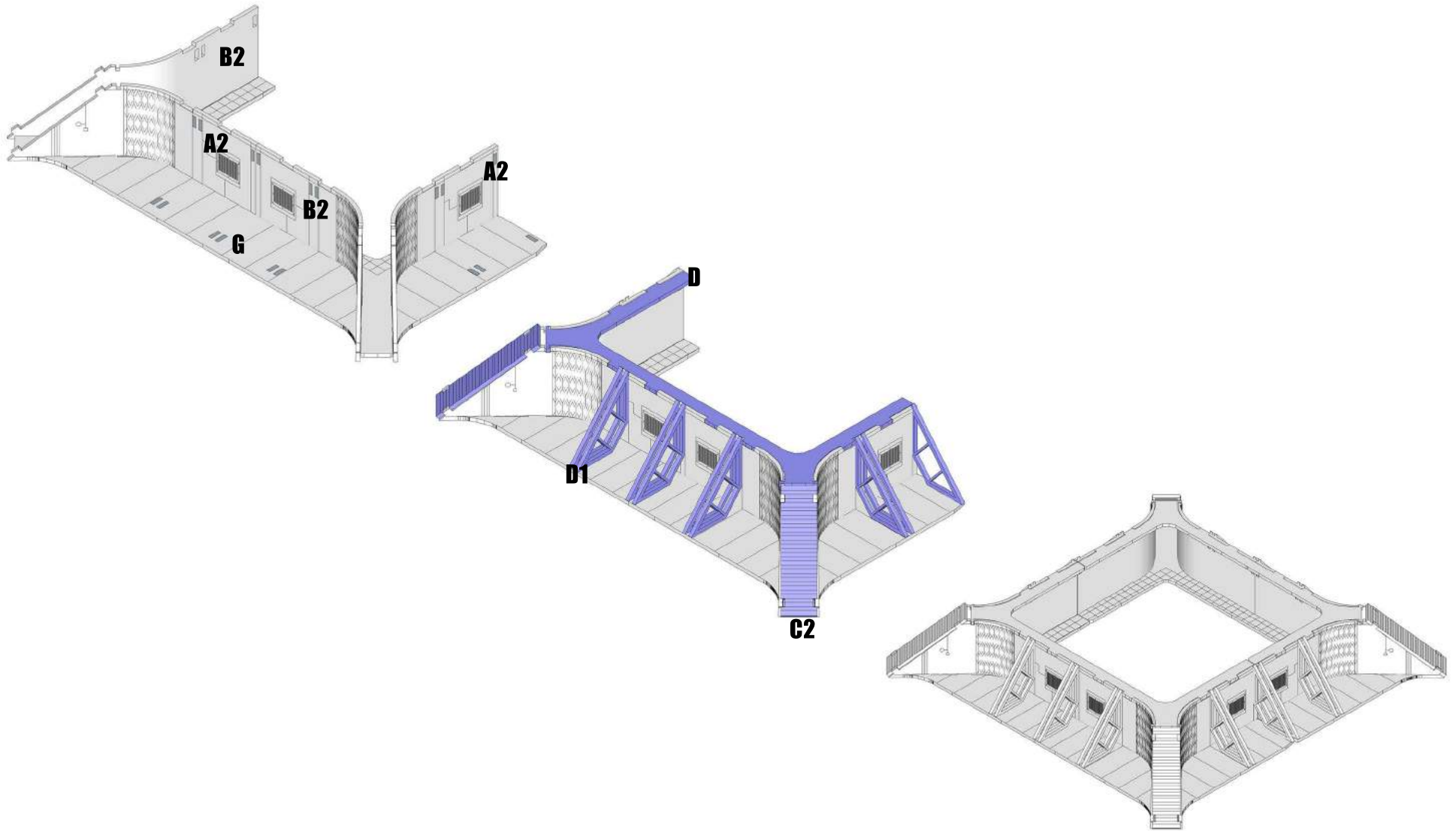


PBS HEADQUARTERS



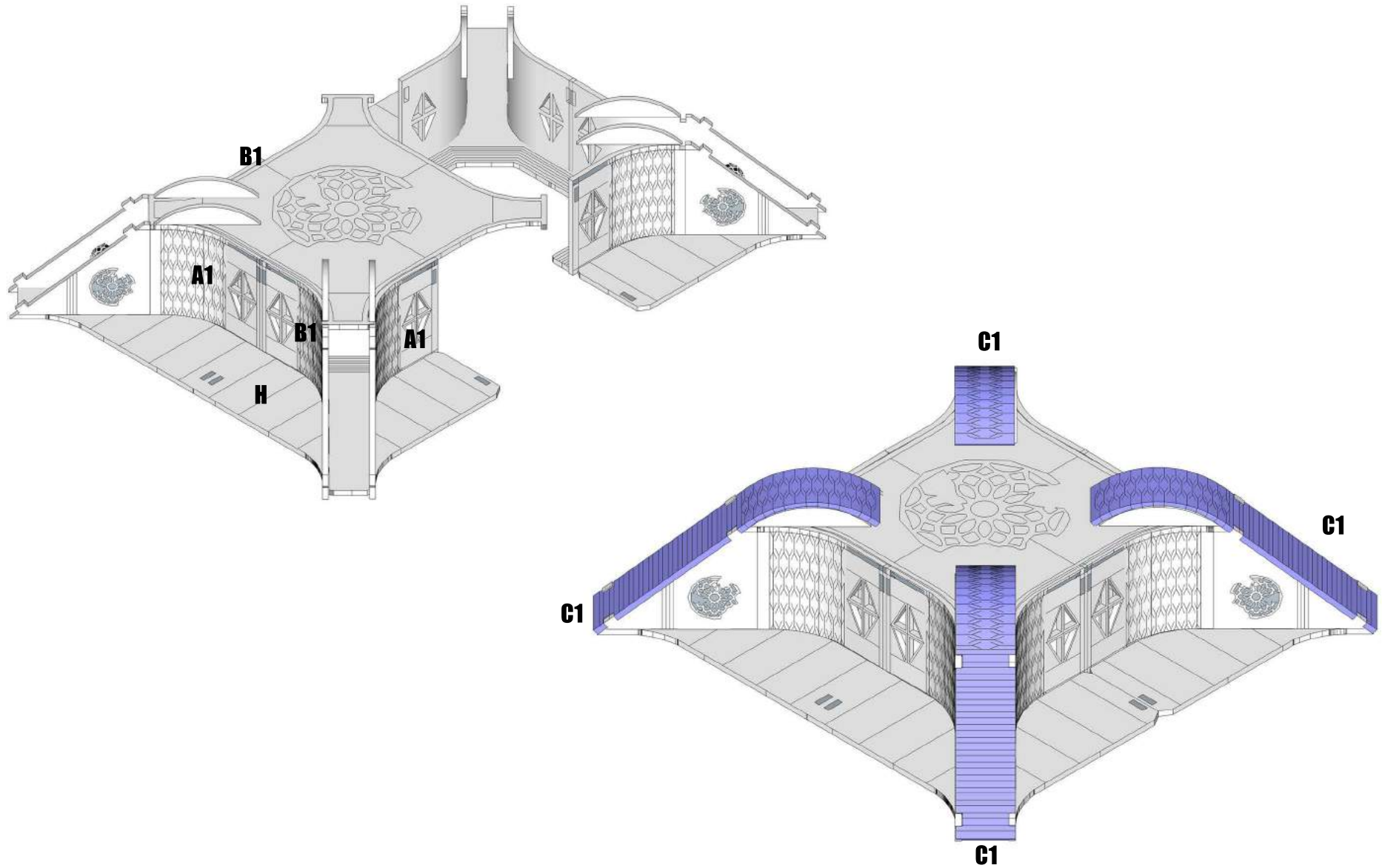


PBS HEADQUARTERS





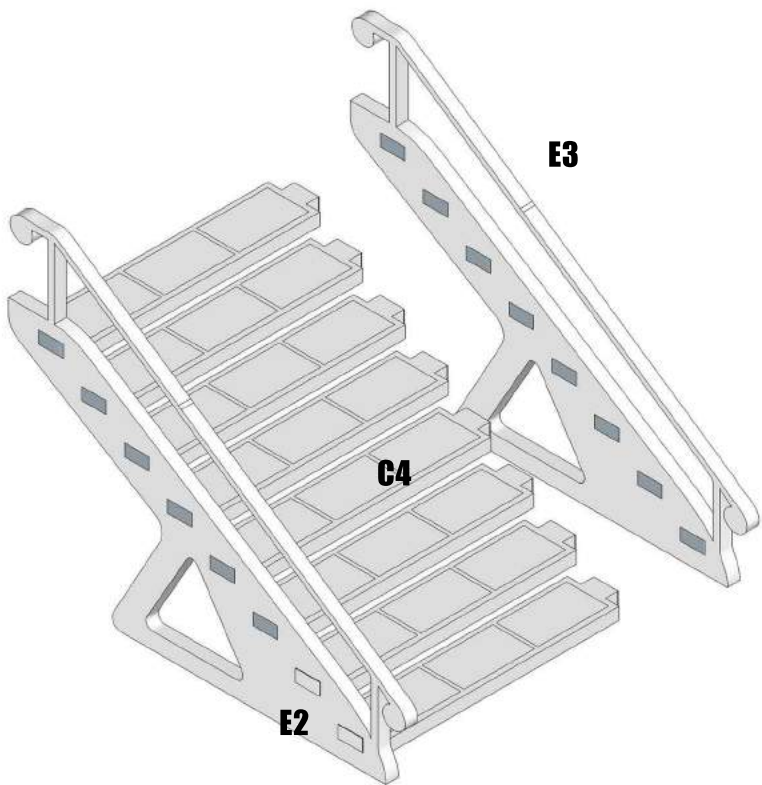
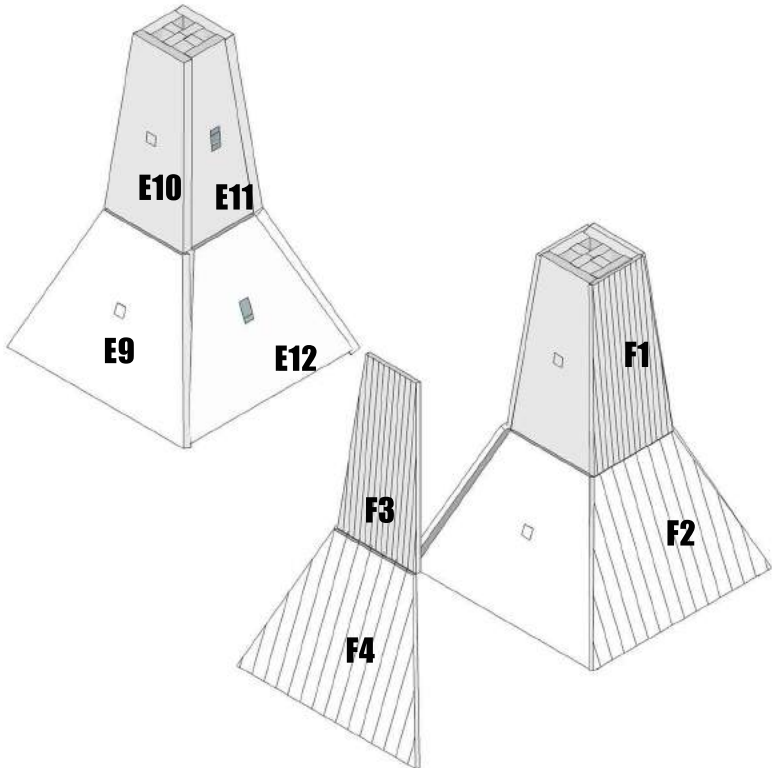
PBS HEADQUARTERS





PBS HEADQUARTERS

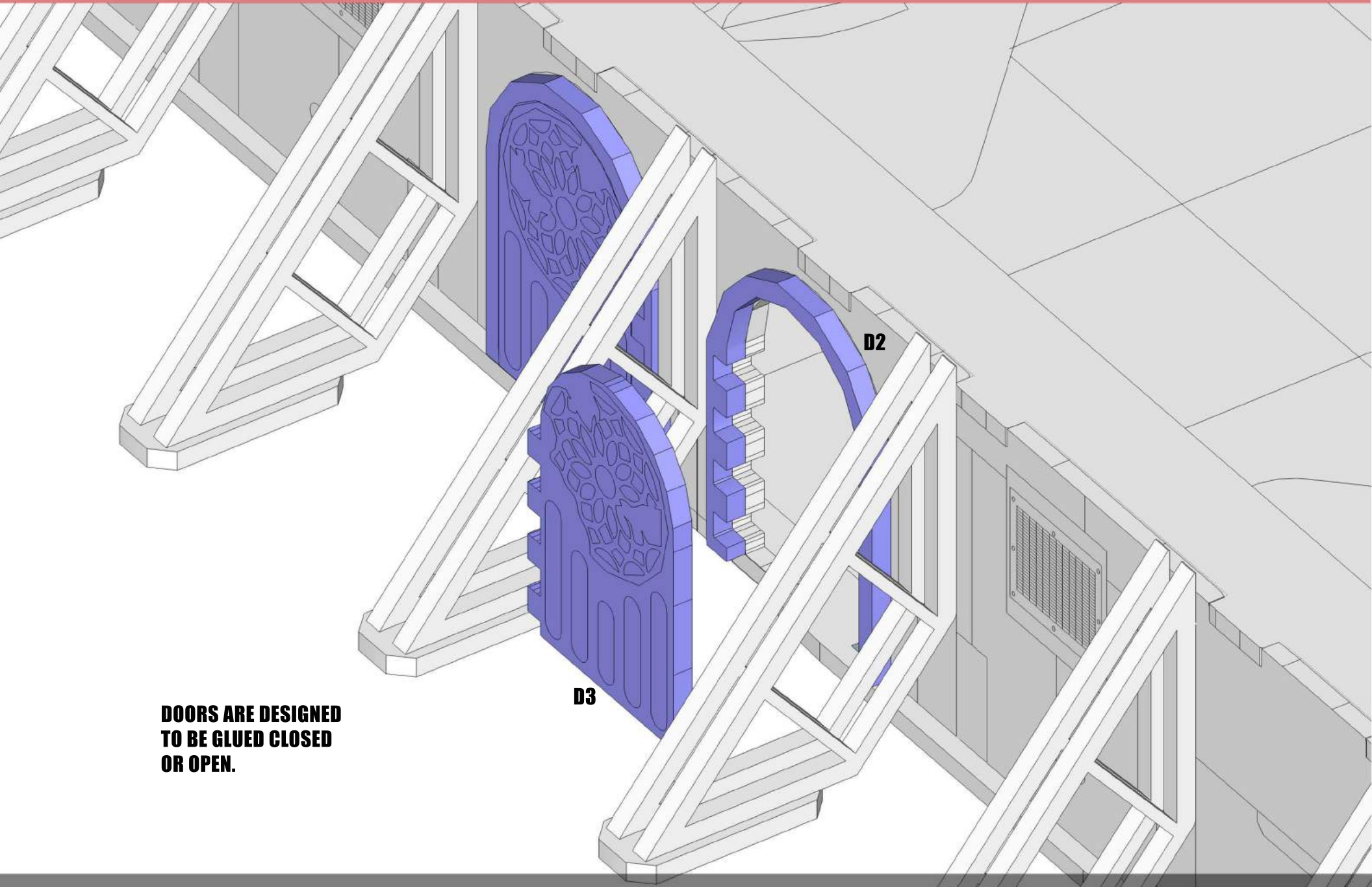
CLAD PARTS E7 E8



GROUND FLOOR STAIRS



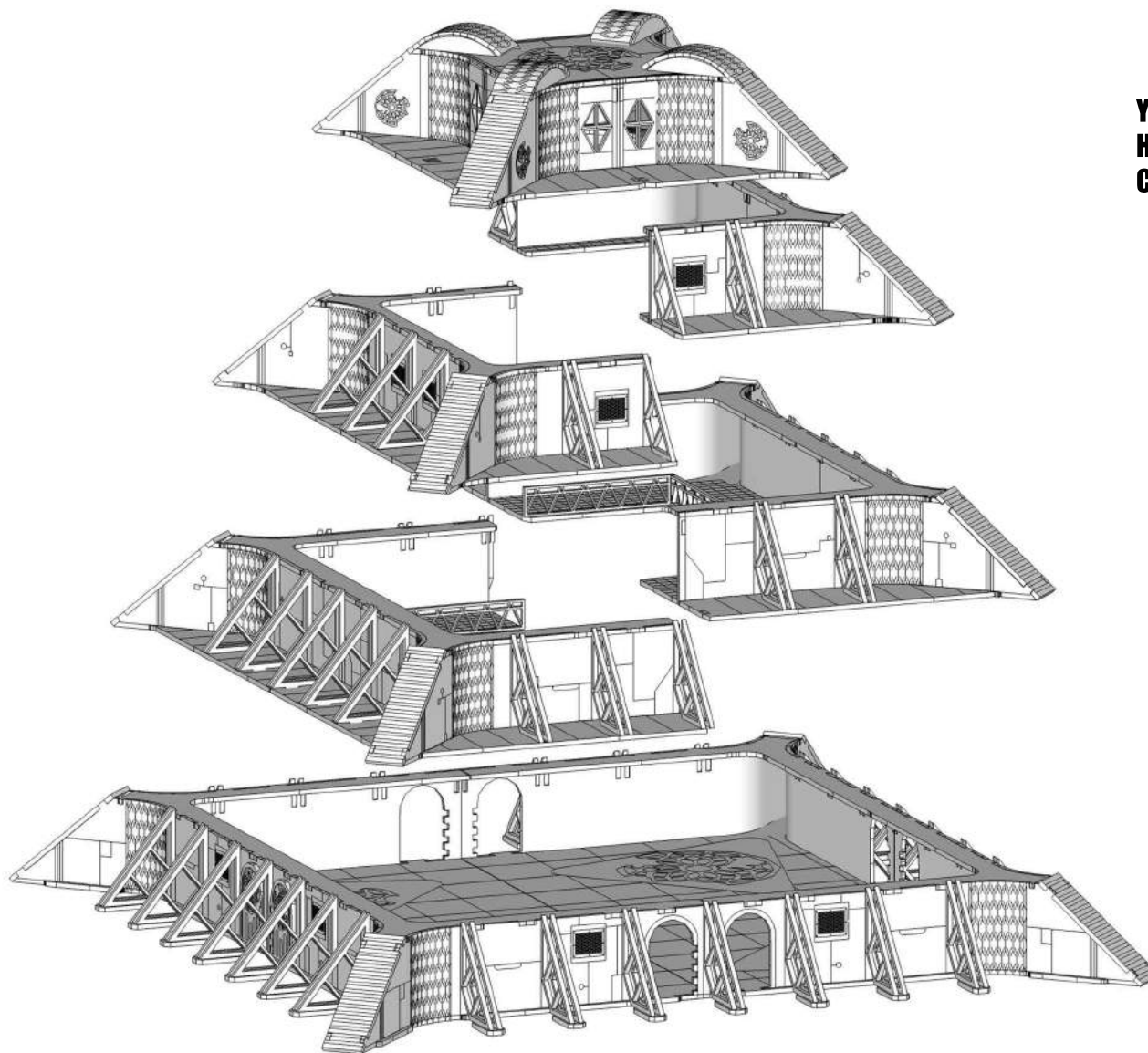
PBS HEADQUARTERS



**DOORS ARE DESIGNED
TO BE GLUED CLOSED
OR OPEN.**



PBS HEADQUARTERS



**YOU CAN SEE HERE
HOW THE DIFFERENT SECTIONS
CAN BE LEFT UNGLUED.**